

Ford (Standard Key)									
Edge	11	12	13	14					
Expedition					15	16	17		
Explorer	11	12	13	14	15				
F-150	11	12	13	14					
F-250	11	12	13	14	15	16			
F-350	11	12	13	14	15	16			
F-450	11	12	13	14	15	16			
F-550	11	12	13	14	15	16			
Flex			13	14	15	16	17	18	19
Lincoln (Standard Key)									
MKX	11	12	13						

• This remote start will monitor the vehicle door lock circuit and is activated by pressing Lock>Unlock>Lock on your OEM remote.

• This is a pre-wired "plug and play" kit. No wire connections are required.

• We have already loaded the correct firmware into the remote start module. You will need to program the module to your vehicle when the installation is complete. Programming instructions begin on page 3.

• YOU MUST HAVE 2 MASTER KEYS FOR PROGRAMMING!
Cloned keys will not work.

- Where Everything Goes

Remote Start Module – the wiring for the module is done under the dash on the driver's side, so you'll want to install the module in that general area. Before you start wiring, look for a location where there's some open space that will fit the module. Pay attention to moving parts like the pedals, e-brake and steering column. Be sure to route your wiring away from those areas.

STEP 1: Prepare the Vehicle

- Remove the screws that hold the lower dash panel and pull gently to remove the panel.
- Remove four 8mm screws that hold the metal cover plate.
- Remove the screws from the steering column cover, then use a pry tool to remove the lower steering column shroud.
- Remove the two 7mm screws that hold the OBD2 connector in place.

STEP 2: Make The Plug-In Connections

- You will need to access two plugs under the steering column: The ignition plug towards the back of the key cylinder assembly and the immobilizer plug at the front (see pictures below).
- Carefully disconnect the connectors and insert the male plugs from the T-harness in their place. Then plug the vehicle connectors in to the T-harness female connectors.
- Next, plug the OBD2 connector from the vehicle into the OBD2 T-harness, mount the new OBD2 connector.

- **Wiring is now complete.** You will have the following connectors available to plug in to the EVOALL module - but don't plug them in yet. That is done during the programming process.

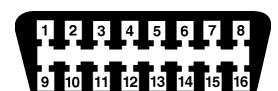
- 20-Pin White Connector, 6-Pin Red Connector and 4-Pin Black Connector from the main T-harness
- 5-Pin connector from the OBD2 T-harness.

Ignition barrel

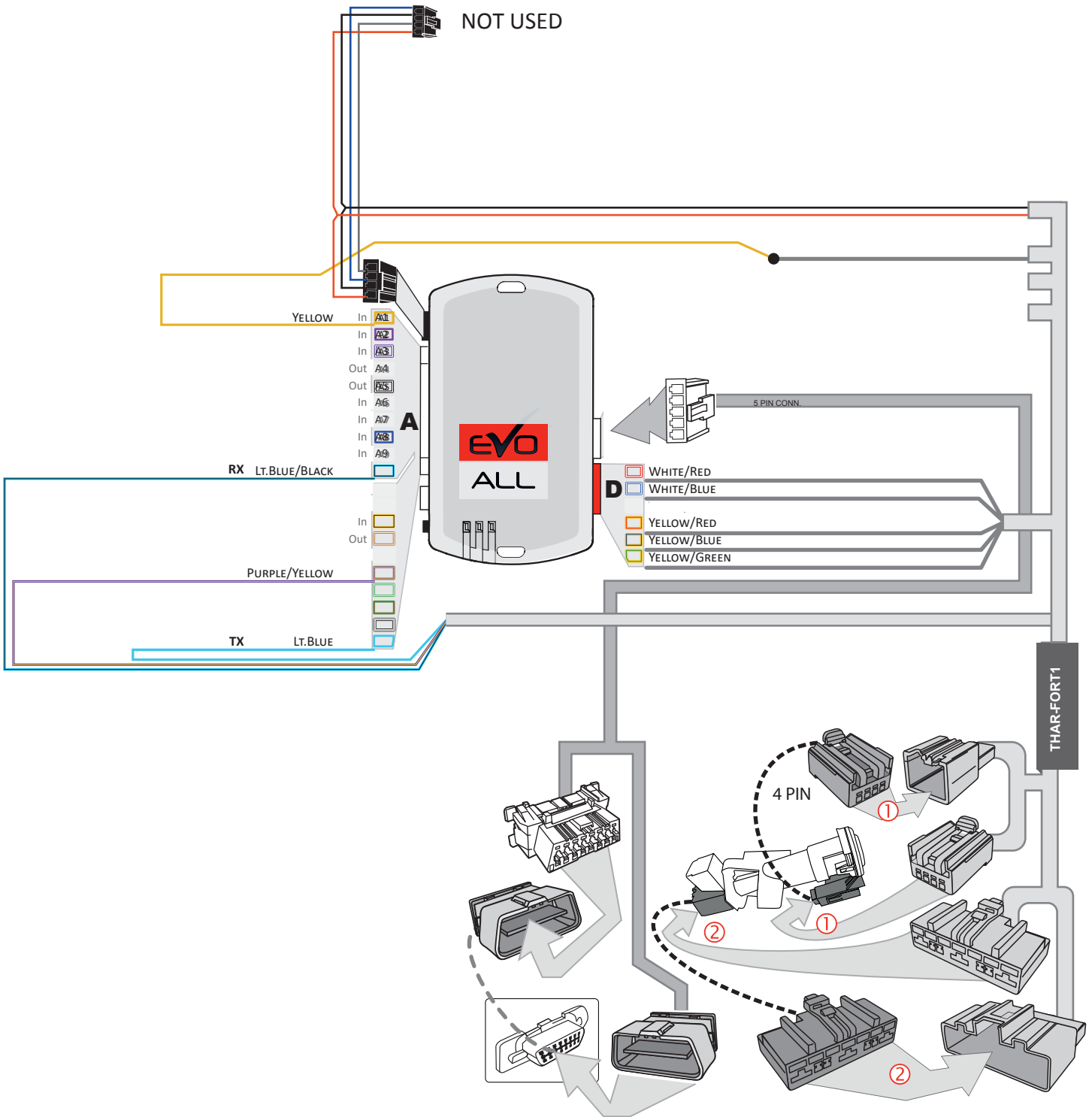
- Immobilizer connector near key slot
- Ignition connector towards rear



- OBD-II connector

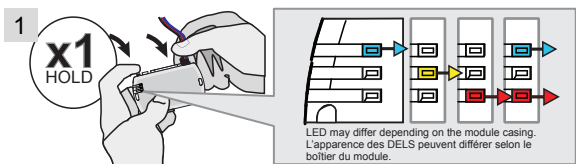


System Wiring Diagram



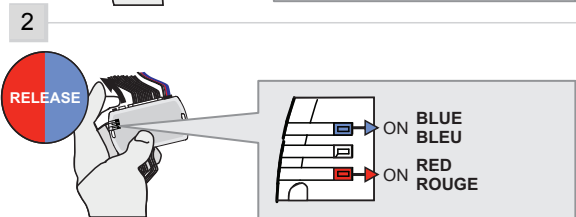
STEP 3: Programming

Start with all the plugs disconnected from the remote start module.



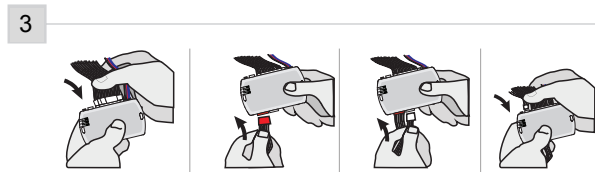
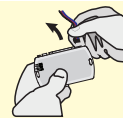
Press and hold the programming button:
Connect the 4-PIN Data-link harness (Black connector).

↳ The Blue, Red, Yellow and Blue & Red LEDs will alternatively illuminate.

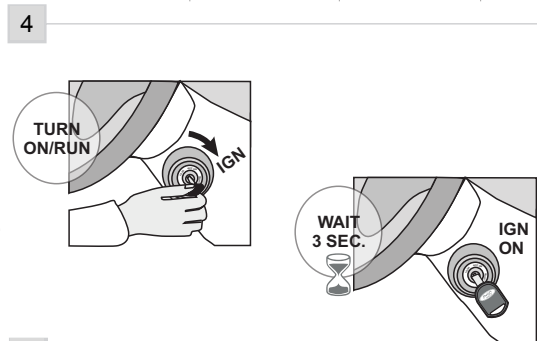


Release the programming button when the LED are BLUE & RED.

If the LED are not solid BLUE and RED disconnect the 4-Pin connector (Data-Link) and go back to step 7.

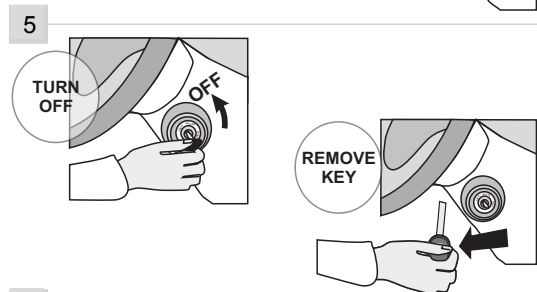
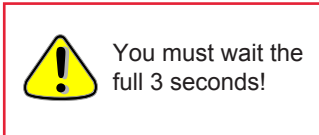


Insert the required remaining connectors.



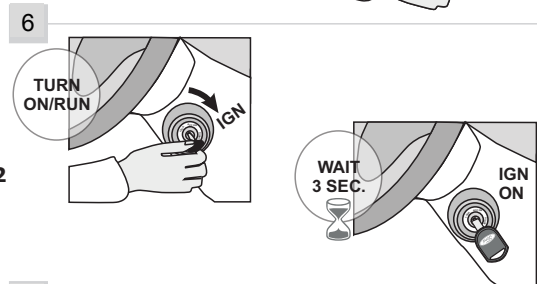
Turn the first functional key to the Ignition ON/RUN position.

Wait a FULL 3 seconds.



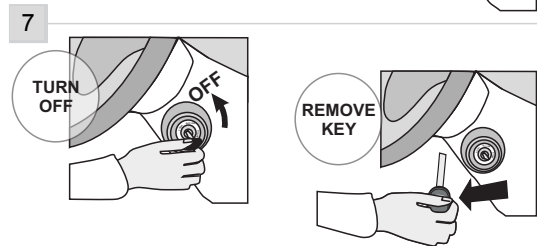
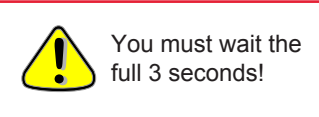
Turn the key to the OFF position.

and **remove** the first key.



Turn the second functional key to the Ignition ON/RUN position.

Wait a FULL 3 seconds.



Turn the key to the OFF position.

and **remove** the second key.



CONTINUED NEXT PAGE

8

KEY #1

TURN ON/RUN

IGN

IGNITION ON → FLASH 10X

FLASH 10X

FLASH 10X

WAIT

FLASH

Re-insert the first key and turn to the Ignition ON/RUN position.

- ↳ The RED AND BLUE LEDs will flash rapidly ten (10) times. Key bypass programmed.

Wait

- ↳ The BLUE LED will flash rapidly. CAN-Bus programmed.

9

TURN OFF

OFF

FLASH RAPIDLY → IGNITION OFF

OFF

ON

Turn the Ignition to the OFF position.

- ↳ The BLUE LED will turn off.
- ↳ The YELLOW LED will turn on.



The module is now programmed.

Step 4: Test the System

Close all doors and the hood. Using your OEM remote control press LOCK>UNLOCK>LOCK with each press approximately 1 second apart. After a few seconds the dash lights will turn on. About 20 seconds later the vehicle will start. Let it run for a few minutes, then unlock the door with your OEM fob, enter the truck, and step on the brake. The engine should shut down. Testing is complete.

All doors must be closed.

Start

Remote start the vehicle.

UNLOCK

Unlock the doors with the OEM remote.

TURN ON/RUN

ON

Insert and Turn the key to the Ignition ON/RUN position.

Press the brake pedal.

The vehicle can now be put in to gear and driven.

Step 5: Close it Up

Now gather up all of your wiring and neatly bundle it together using zip ties or electrical tape. Find a secure place to put the remote start module and use zip ties to secure it. **Make sure that the remote start wires are not near any moving parts on the steering wheel, pedals or emergency brake!** Re-Install any panels that were removed to gain access to key switch in reverse order they were removed. ENJOY!

If you have any installation questions or problems, call for tech support

520.579.1531

Copyright 2024 Kleinn Automotive Accessories