

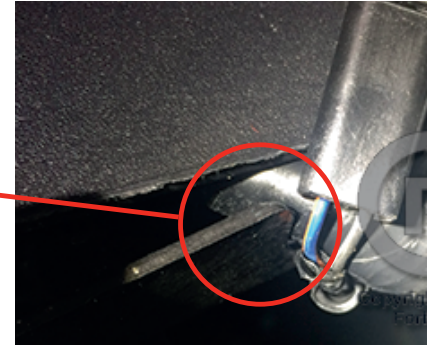
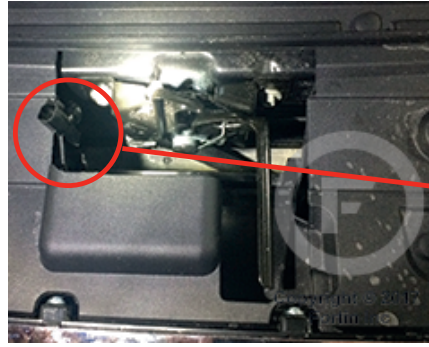
- This remote start connects through the Junction module and activates the factory remote start built into these vehicles.
- This is a pre-wired "Semi-plug and play kit". Only one connection (ground) is required into the truck for installation.
- We have already loaded the correct firmware into the remote start module. You will need to pair the module to your vehicle when the installation is complete. Programming instructions begin on page 3.

- Where Everything Goes

Remote Start Module – the wiring for the module is done behind the glove box passenger side, so you'll want to install the module in that general area. Before you start wiring, look for a location where there's some open space that will fit the module. Pay attention to any moving parts in that area and route your wiring away from those areas.

STEP 1: Check for OEM hood pin

Either open the hood and start the vehicle and check the gauge cluster for a Hood Open/Ajar message or visually inspect the hood latch assembly and locate the wiring connector that plugs in to the factory hood pin. If vehicle shows a Hood Open/Ajar message in the cluster or the connector is plugged in to the hood latch assembly, the vehicle has a factory hood pin and you can proceed to Step 2. *-If the connector is not plugged in, then there is no factory hood pin and you will need to use the small red jumper provided with the kit to short the two terminals inside the connector or ground the hood pin wire at the BCM.*

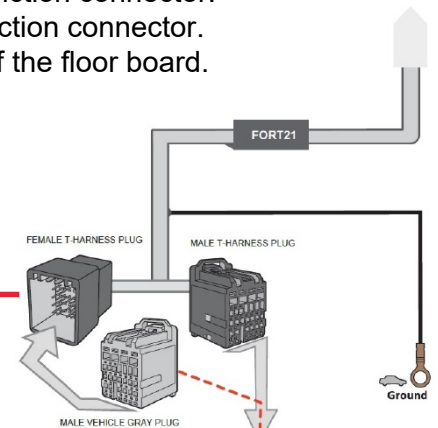


STEP 2: Connect the remote start harness to the Junction Module Plug

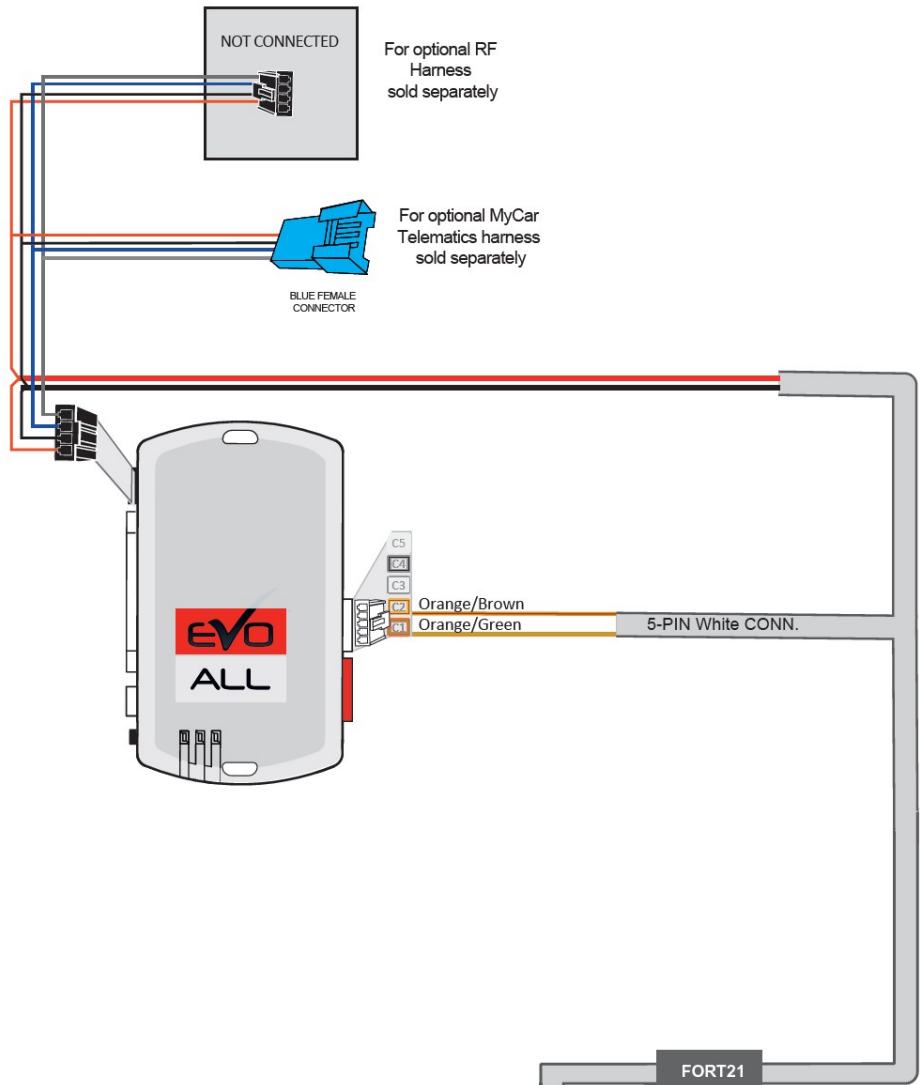
- Remove the glove box by pushing in on the side tabs to release the tabs and open the glove box fully.
- Pull the glove box away from the lower hinges and set aside.
- Locate the Gray 30-pin connector and unplug it from the Junction connector.
- Insert the male connector from the Kleinn harness into the factory female Gray junction connector.
- Then connect the Kleinn harness female connector into the factory male Gray junction connector.
- The Black Ground wire connection can be made at a body bolt lower left corner of the floor board.

- Basic wiring is now complete.

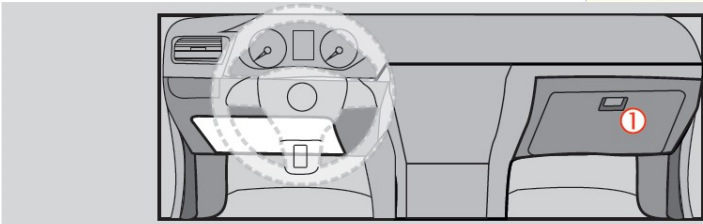
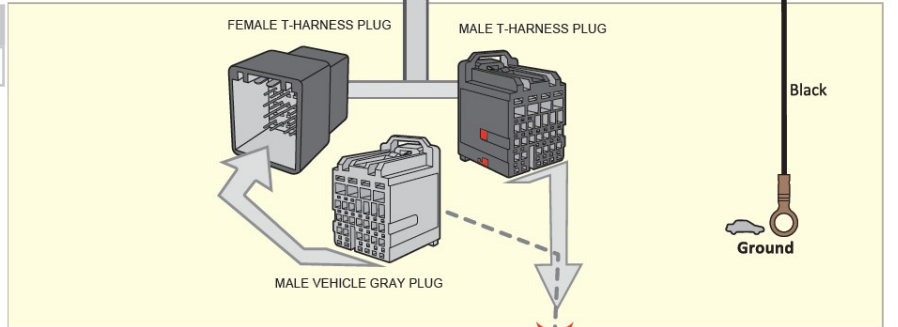
Behind glove box



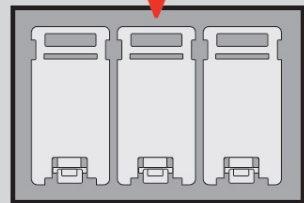
System Wiring Diagram



F-150



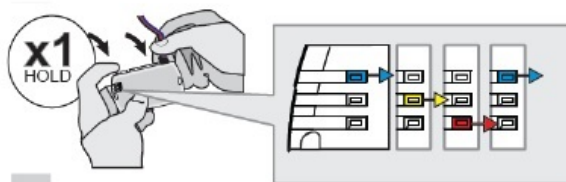
① Behind glove box
Back view, 30-pin
Gray connector



Step 3: Programming (For Push to Start & Key-Start Vehicles)

Begin with all plugs disconnected from the remote start brain, then perform the programming steps below:

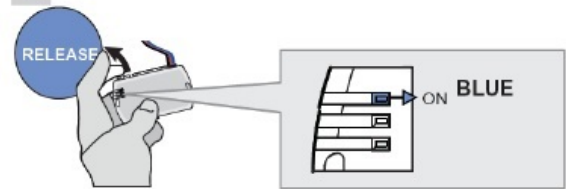
1



Press and hold the programming button:
Insert the 4-Pin (Data-Link) connector.

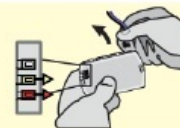
↳ The Blue, Red, Yellow and Blue & Red LEDs will alternatively illuminate.

2

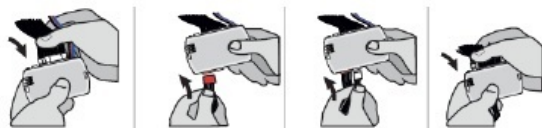


Release the programming button when the LED is BLUE.

If the LED is not solid BLUE disconnect the 4-Pin connector (Data-Link) and go back to step 1.

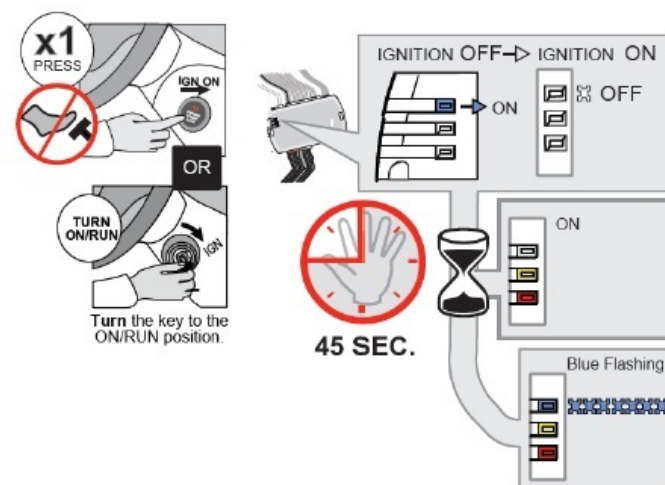


3



Insert the required remaining connectors.

4



Turn the ignition to ON/RUN.

- Do not press the brake pedal. Press the Push-to-Start button once to turn on the ignition.
- Or turn the key to the ON/RUN position

↳ The BLUE LED will turn OFF.

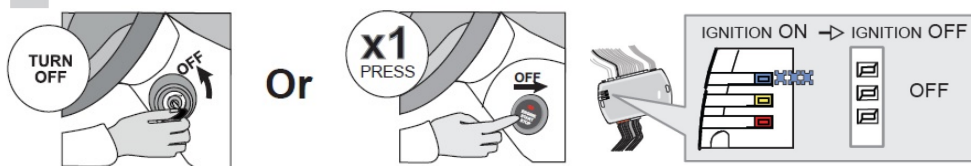
↳ The YELLOW and RED LEDs will turn ON.

Wait, at least 45 seconds, do not disconnect the modules or turn off the ignition.

↳ The RED and YELLOW LEDs ON.

↳ The BLUE LED will flash rapidly.

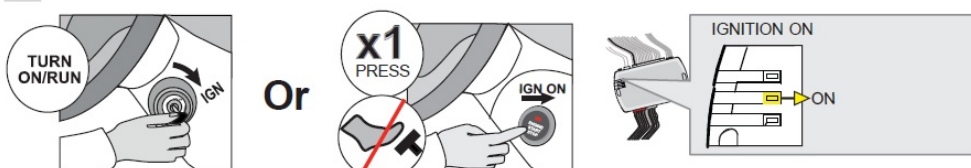
5



Turn the Ignition OFF

↳ All LED's will turn off.

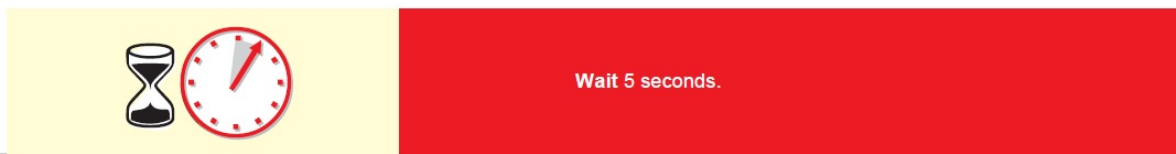
6



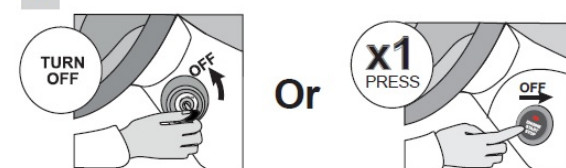
Turn the Ignition to the ON/RUN position.

↳ The YELLOW LED will turn ON.

7



8



Turn the ignition to the OFF position.
Programming is complete

Step 4: Test the System

①

Press Lock>Unlock>Lock on the OEM remote to activate the remote starter.

The vehicle's ignition/accessory circuits will turn on after a few seconds. Another few seconds later the starter motor will engage. It's all about getting the timing down. Lock-1000-Unlock-1000-Lock. The Blue light on the remote start module will flash each time you press the Lock or Unlock button.

②

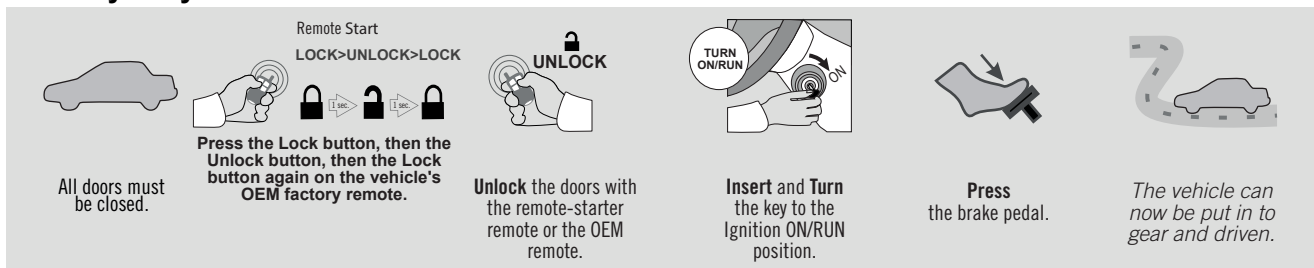


Step on the brake pedal to stop the engine.

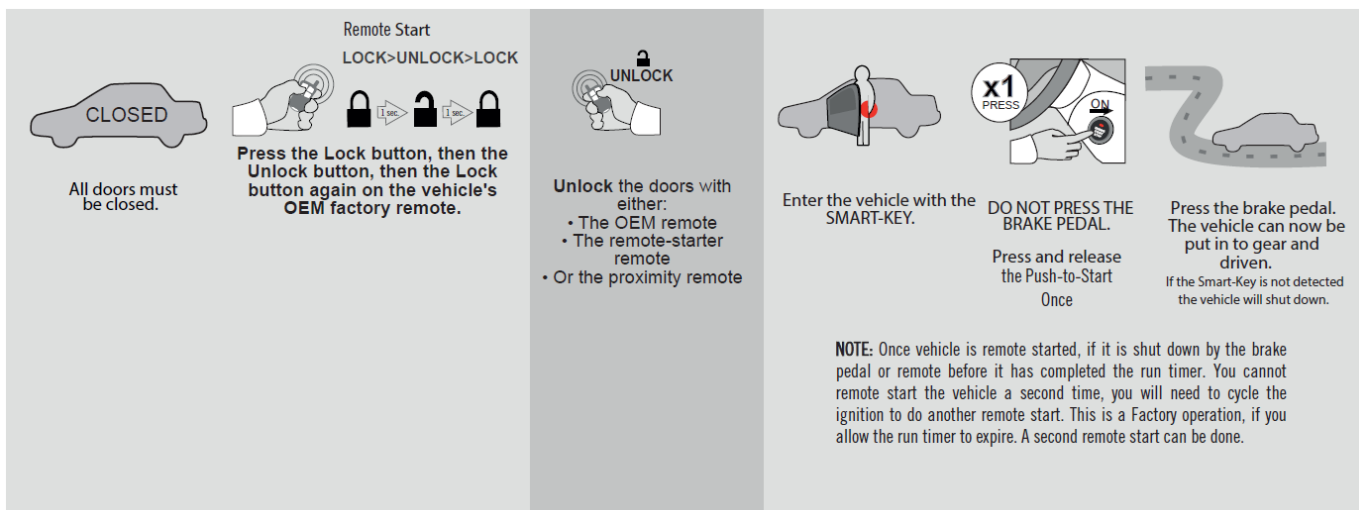
Step 5: Close it Up

Now gather up all of your wiring and neatly bundle it together using zip ties or electrical tape. Find a secure place to put the remote start module and use zip ties to secure it. **Make sure that the remote start wires are not near any moving parts on the steering wheel, pedals or emergency brake!** Re-Install any panels that were removed to install the remote start in reverse order they were removed. ENJOY!

Functionality: Key Start Vehicles



Functionality: Push-to-Start Start Vehicles



If you have any installation questions or problems, call for tech support

520.579.1531

Copyright 2024 Kleinn Automotive Accessories