



Installation Guide

2020+ FORD with PUSH TO START IGNITION

RSFD3B



* For automatic transmission vehicles only.

You may view a high-resolution color version of this guide online at :
<https://kleinnretail.s3.amazonaws.com/pdfs/KL%2BRSFD3B.pdf> or by scanning this QR code.

-This remote start connects through the gateway plug and activates the factory remote start that is built in to these vehicles but not activated by the dealership.

-This is a pre-wired plug and play kit. No wire connections are required in to the truck for basic installation.

-This remote start will monitor the vehicle door lock circuit and is activated by pressing **Lock>Unlock>Lock** on your OEM remote.

-We have already loaded the correct software into the remote start module. You will need to pair the module to your key when the installation is complete. Instructions begin on page 5. A Flashlink Updater tool (FLU) is required.

-Depending on how the vehicle was prepped by the Ford dealer, you may need to bring the truck to the dealer or use a Ford scan tool to enable the remote start climate controls on the dash cluster. Once the remote start controls in the dash cluster are enabled, the user can adjust run time and climate control.

Tip #1 – Where Everything Goes

Remote Start Module – the wiring for the module is done under the dash on the driver's side, so you'll want to install the module in that general area. Before you start wiring, look for a location where there's some open space that will fit the module. Pay attention to moving parts like the pedals, e-brake and steering column. Be sure to route your wiring away from those areas.

Step 1: Download and install Flash Link Manager software

**The Flash Link Manager (FLM) software only works on a Windows computer and requires a USB port and an internet connection. Enter the following link into your web browser, then download and install the software:

<https://fortin.ca/en/support/flashlinkmanager.html>

Next, open the software and log in with the following credentials:

email: flash@kleinn.com

password: Flash2020

Once the (FLM) software installed and open, then connect the Flash Link Updater (FLU) to the USB port of your Windows computer. The (FLM) software will detect (FLU) and display a message that the module is not connected, this is normal. Do not plug the remote starter into the (FLU) tool until you have completed the wiring and vehicle programming procedure at step 3. Leave the computer and software in this state ready to decrypt later in the programming

STEP 2: Check for OEM hood pin.

Visually inspect the hood latch assembly and locate the wiring connector that plugs in to the factory hood pin. If the connector is plugged in to the hood latch assembly, the vehicle has a factory hood pin and you can proceed to Step 2. If the connector is not plugged in, then there is no factory hood pin and you will need to use the small red jumper provided with the kit to short the two terminals inside the connector.



Take the Red wire from the Accessory Pack to use as a jumper to connect the two pins in the hood pin plug as shown below.

Jumper wire

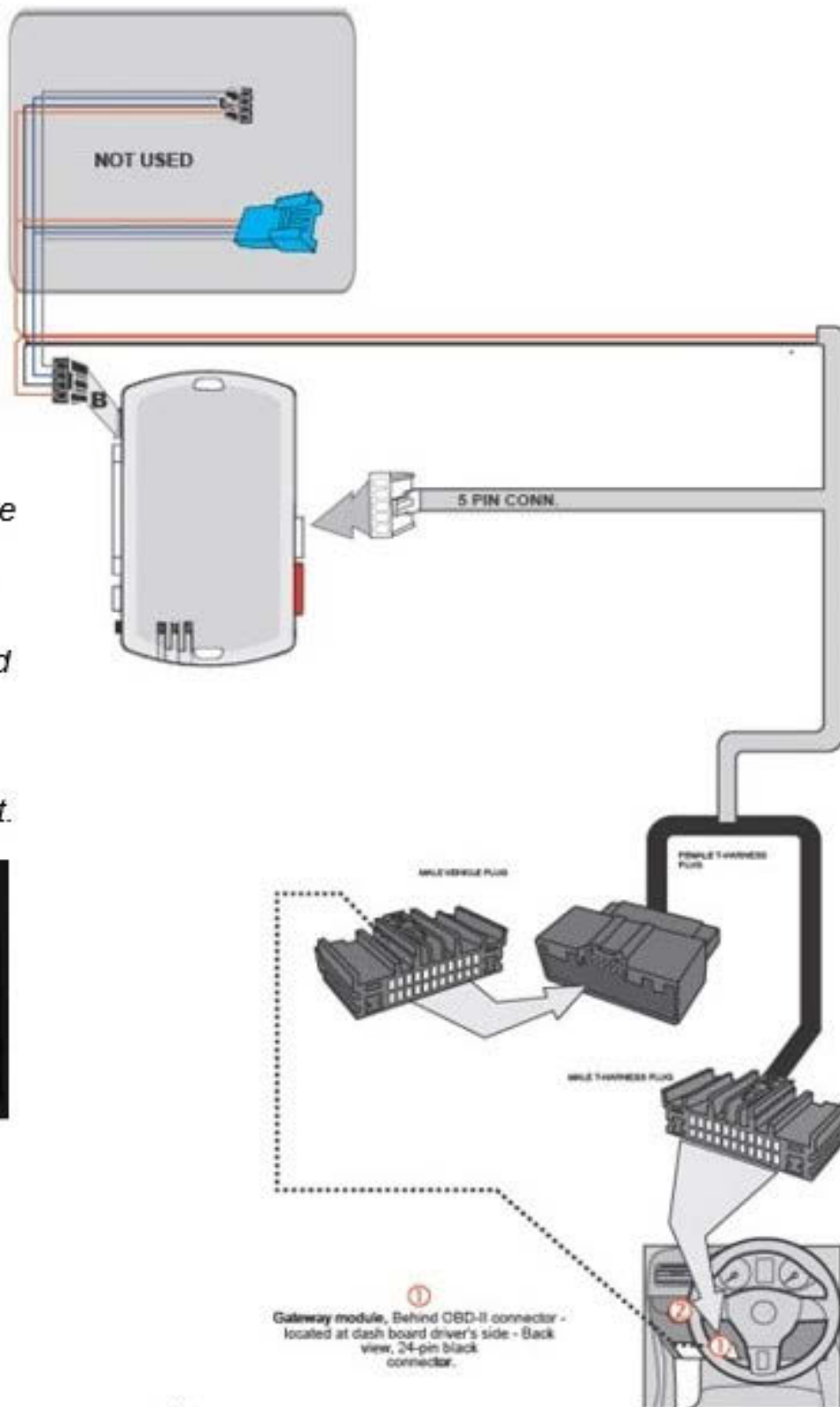


STEP 3: Connect the remote start harness to the Gateway Plug

Reach behind the OBD2 port and release the locking tabs that hold the Gateway Plug into the back of the OBD2 port. If you have a Ford Edge, refer to diagram labeled for the Edge below for Gateway Plug location. Insert the male Gateway Plug you just removed in to the female receptacle on the Klein remote start harness. Then insert the male connector from the Klein harness back in to the rear of the OBD2 port. Basic wiring is now complete.

System wire diagram

2020 Ford F-150 , 2020- 2021 F-250/350/450 , 2020-2024 Ranger, 2021-2023 Bronco Sport, 2020-2022 Escape, 2018-2021 Expedition, 2020-2023 Explorer, 2022 Maverick



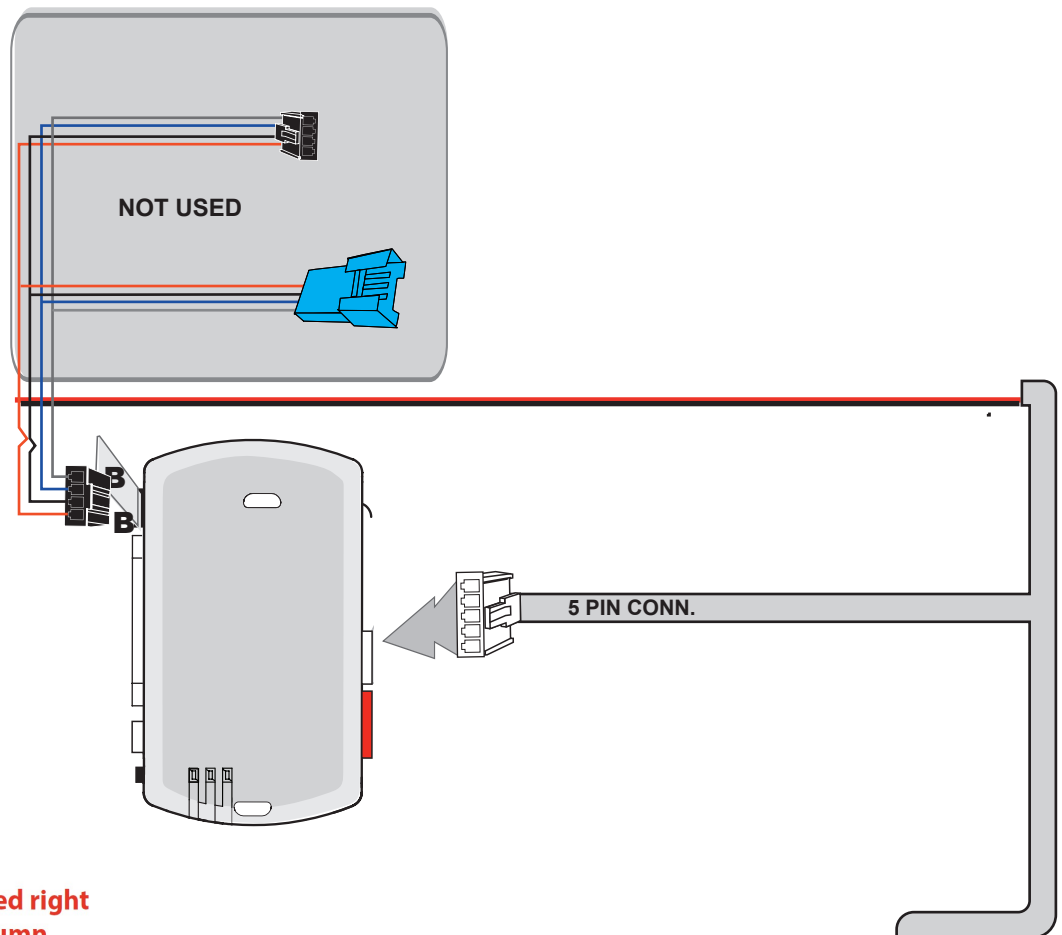
Tip #2

Take a photo of the remote start module's service number. In the event we need to assist you with troubleshooting, we'll need that information. If you have photo, you won't need to disassemble the dash panels again to get it.

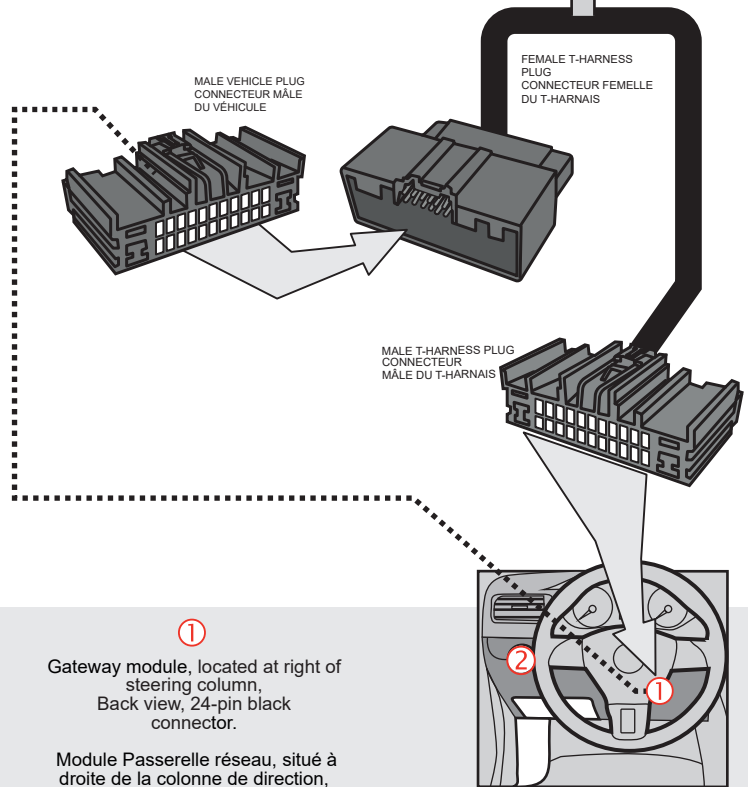
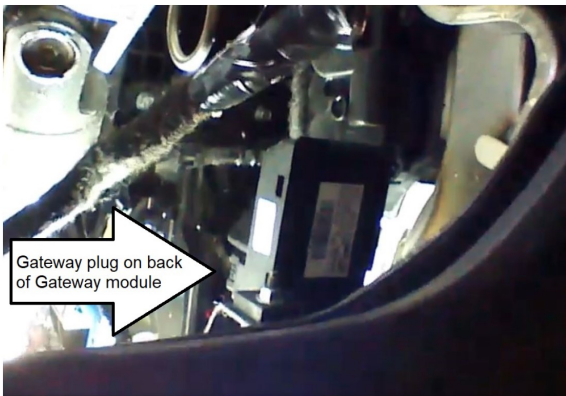


System wire diagram

2020 Edge



Gateway module located right side of steering column



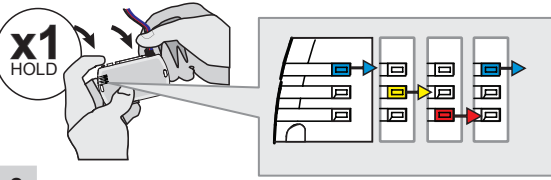
① Gateway module, located at right of steering column, Back view, 24-pin black connector.

Module Passerelle réseau, situé à droite de la colonne de direction, Vue de dos, connector Noir de 24-pin.

Step 5: Programming

Begin with all plugs disconnected from the remote start brain, then perform the programming steps below:

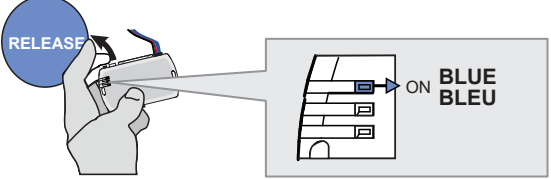
1



Press and hold the programming button:
Insert the 4-Pin (Data-Link) connector.

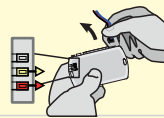
- ↳ The Blue, Red, Yellow and Blue & Red LEDs will alternatively illuminate.

2

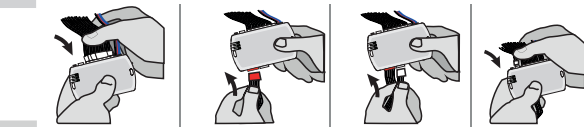


Release the programming button when the LED is BLUE.

If the LED is not solid BLUE disconnect the 4-Pin connector (Data-Link) and go back to step 1.

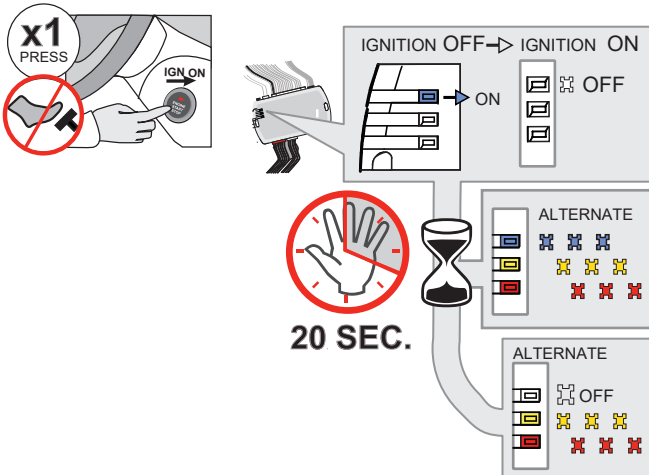


3



Insert the remaining connector.

4




Do not press the brake pedal.
Press the Push-to-Start button once to turn on the ignition.

- ↳ The BLUE LED will turn OFF.
- ↳ The BLUE, YELLOW and RED LEDs will alternate.

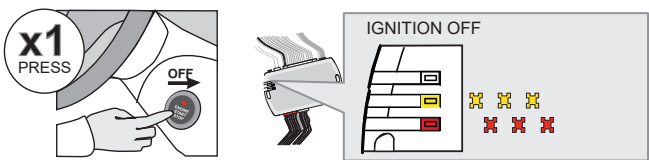
Wait at least 20 seconds. Do not disconnect the modules or turn off the ignition.

- ↳ The RED and YELLOW LEDs will alternate.

Make sure that the LEDs are flashing RED and YELLOW before continuing programming.



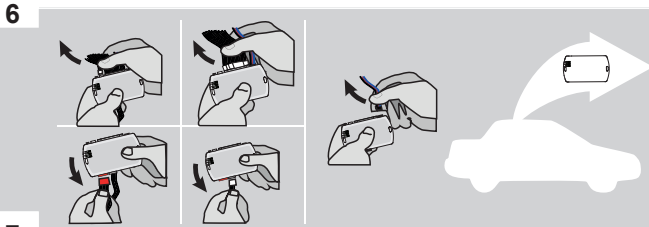
5



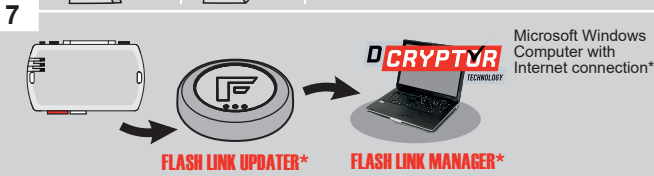
Press the Push-to-Start button once to turn off the ignition.

- ↳ The RED and YELLOW LEDs alternate.

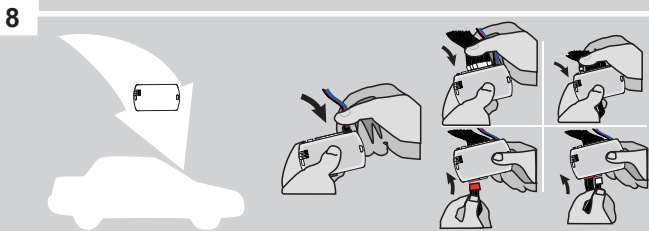
CONTINUED NEXT PAGE



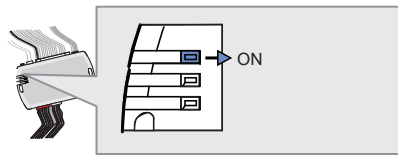
Disconnect the White 5-pin connector, then the Black 4-pin connector.



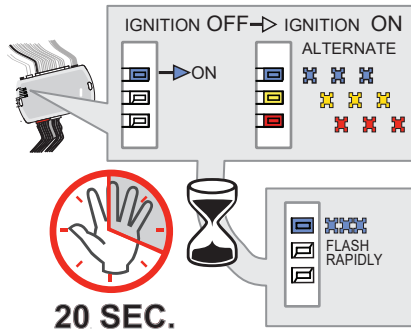
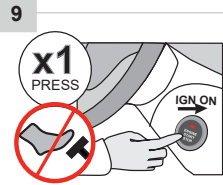
Use the tool:
FLASH LINK UPDATER



AFTER DCRYPTOR PROGRAMMING COMPLETED
Go back to the vehicle and **reconnect** the 4-Pin (Data-Link) connector, then the White connector.



↳ The **BLUE LED** will turn ON.

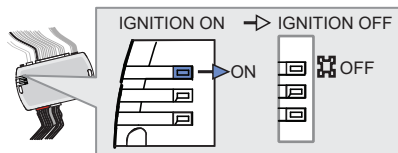
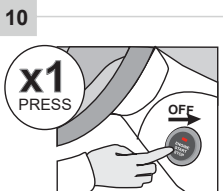


Do **not** press the brake pedal. **Press** the Push-to-Start button once to turn on the ignition.

↳ The **RED** and **YELLOW LEDs** will turn ON.

Wait, at least 20 seconds, do not disconnect the module or turn off the ignition.

↳ The **BLUE LED** will flash rapidly.



Press the Push-to-Start button once to turn off the ignition.

↳ The **BLUE** will turn OFF.

The module is now programmed.

Step 6: Test the System

①

Press Lock>Unlock>Lock on the OEM remote to activate the remote starter.

The vehicle's ignition/accessory circuits will turn on after a few seconds. Another few seconds later the starter motor will engage. It's all about getting the timing down. Lock-1000-Unlock-1000-Lock. You will see the Blue light on the remote start module every time you press Lock or Unlock.

②

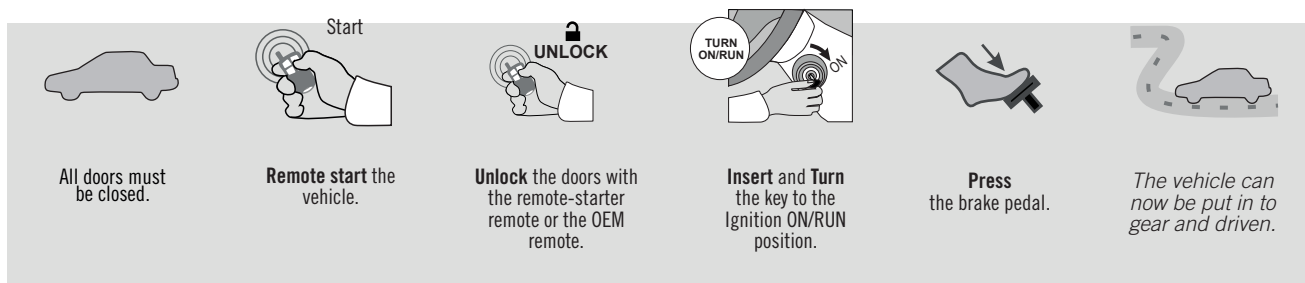


Step on the brake pedal to stop the engine.

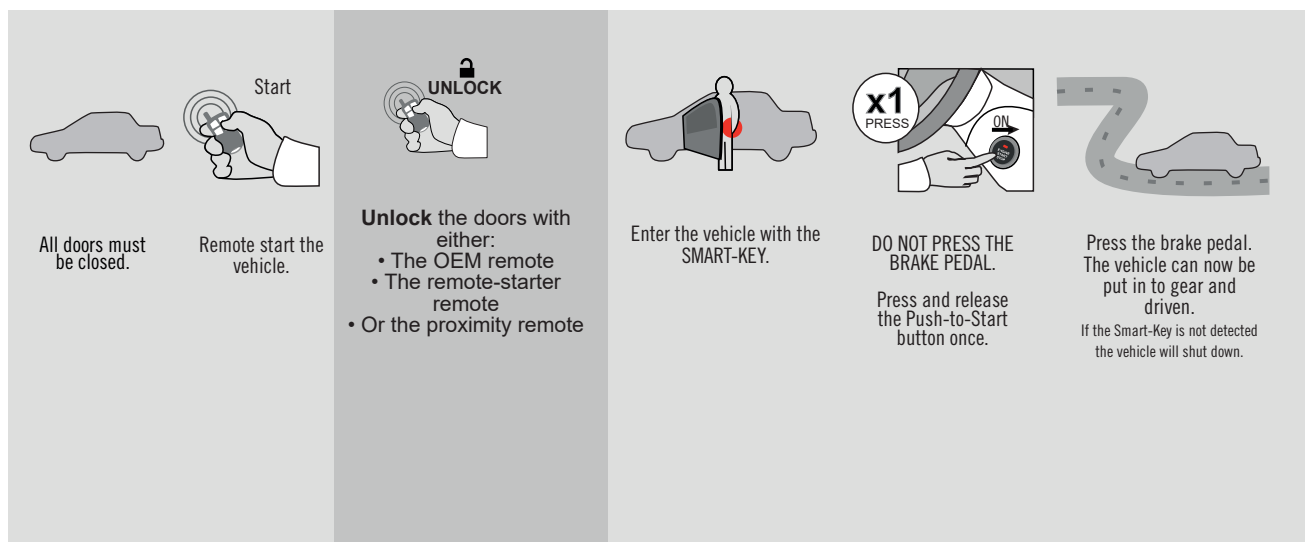
Close it Up

Now gather up all your wiring and neatly bundle it together using zip ties or electrical tape. Find a secure place to put the remote start module and use zip ties to secure it. **Make sure that the remote start wires are not near any moving parts on the steering wheel, pedals or emergency brake!** Re-Install any panels that were removed to gain access to key switch in reverse order they were removed. ENJOY!

Functionality: Key Start Vehicles



Functionality: Push-to-Start Start Vehicles



If you have any installation questions or problems, call for tech support.

520.579.1531

Copyright 2020 Kleinn Automotive Accessories