



Installation Guide

RSFORD21

Ford F-150 2021 - 2022



* For automatic transmission vehicles only with Pushbutton OR Key-Start

You may view a high-resolution color version of this guide online at <http://install.kleinn.com/RSFD21> or by scanning this QR code.

-This remote start connects through the Junction module plug and activates the factory remote start that is built in to these vehicles.

-This is a pre-wired plug and play kit. No wire connections are required in to the truck for basic installation. The kit also includes a single Ground wire that requires a connection.

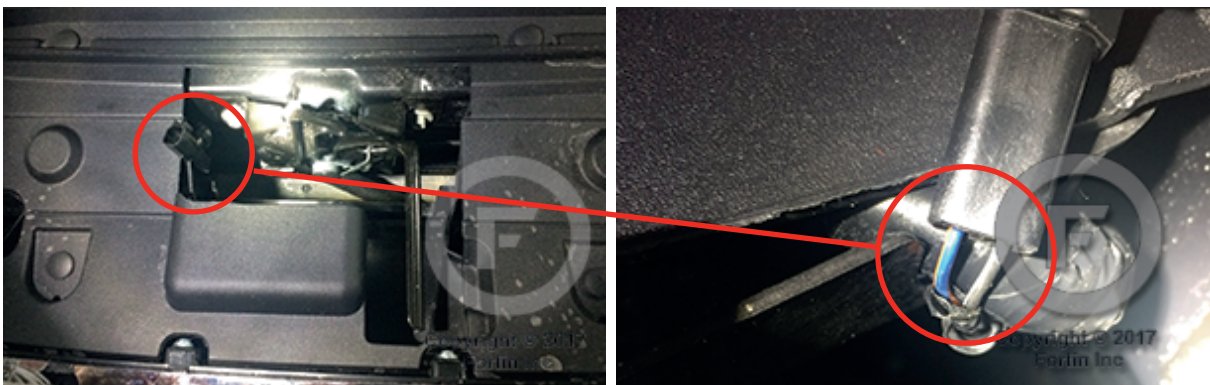
-We have already loaded the correct software into the remote start module. You will need to pair the module to your key when the installation is complete. Instructions begin on page 4.

Tip #1 – Where Everything Goes

Remote Start Module – the wiring for the module is done behind the glove box passenger side, so you'll want to install the module in that general area. Before you start wiring, look for a location where there's some open space that will fit the module. Pay attention to any moving parts in that area. Be sure to route your wiring away from those areas.

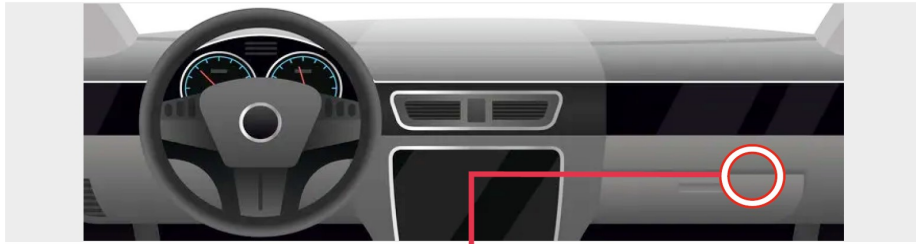
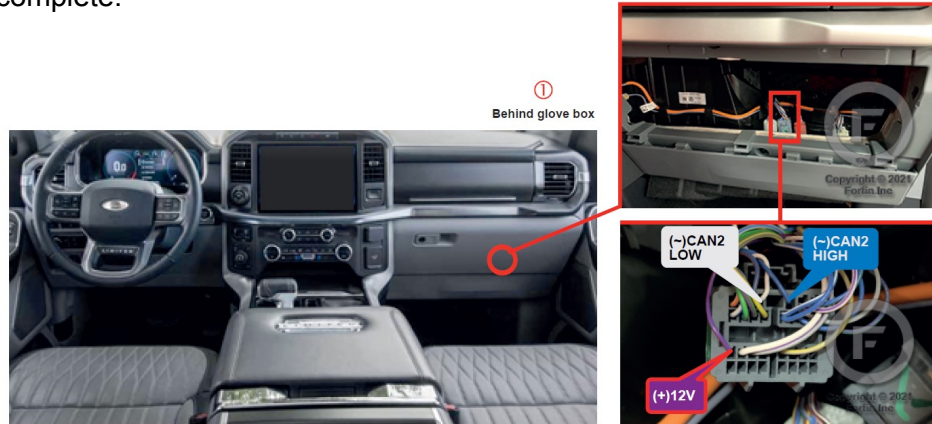
STEP 1: Check for OEM hood pin.

Visually inspect the hood latch assembly and locate the wiring connector that plugs in to the factory hood pin. If the connector is plugged in to the hood latch assembly, the vehicle has a factory hood pin and you can proceed to Step 2. If the connector is not plugged in, then there is no factory hood pin and you will need to use the small red jumper provided with the kit to short the two terminals inside the connector.

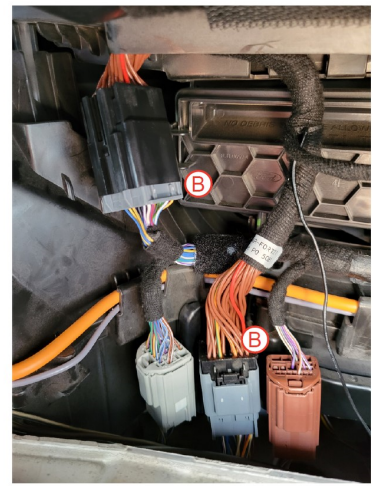
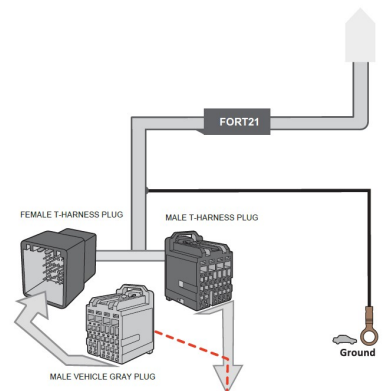
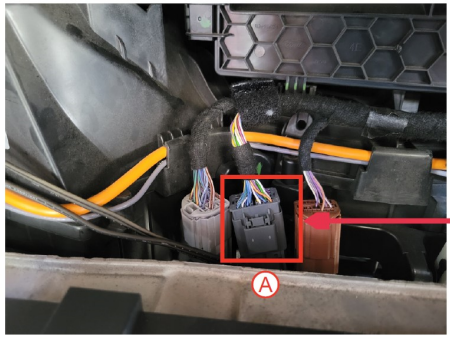


STEP 2: Connect the remote start harness to the Junction Module Plug

Remove the glove box by pushing in on the side tabs to release the tabs and open the glove fully. Pull the glove box away from the lower hinges and set aside. There are 3 Junction connectors, locate the Gray 30-pin connector. Then insert the male connector from the Kleinn harness to the factory female Gray junction connector. Then connect the Kleinn harness female connector in to the factory male connector. The Black Ground wire connection can be made at a body bolt lower left corner of floor board. Basic wiring is now complete.



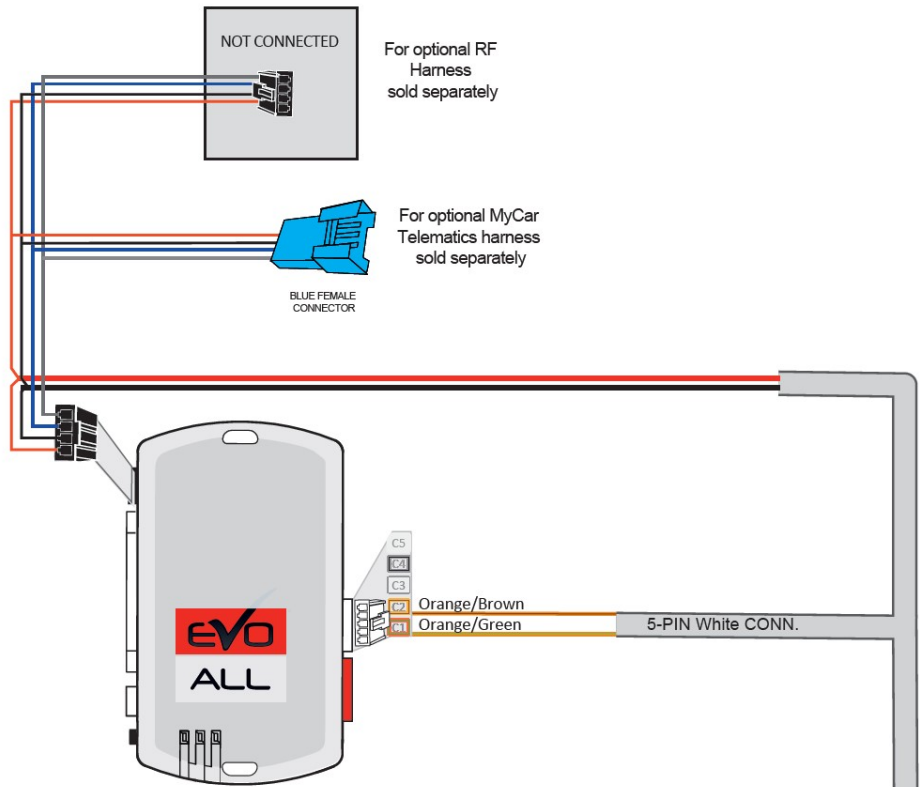
① Junction Module Behind Glove Box



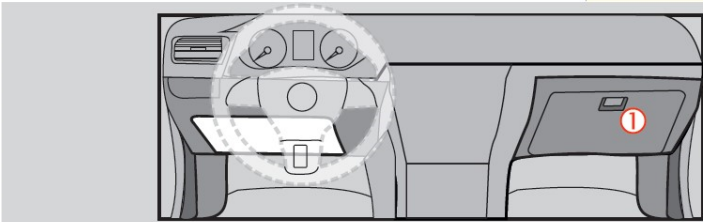
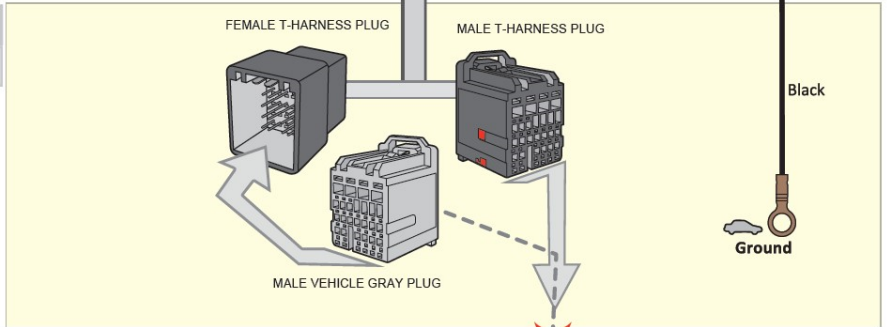
Junction Module connector Behind Glove Box

Remove the Glove Box door to access the Junction Module connectors behind the glove box. Locate the Gray 30-Pin connector as shown in image A. Use the T-Harness connectors for the in-line connections to the Gray 30-pin connector as shown in image B. Plugging the Male Black connector of the T-harness in to the Factory Gray Female connector. Plug the T-Harness Black Female in to the Factory Gray Male connector. The Black Ground wire connection can be made at a body bolt lower corner of floor board.

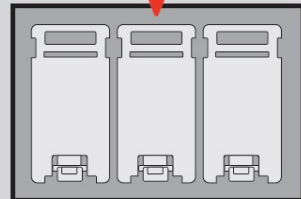
System wire diagram



F-150



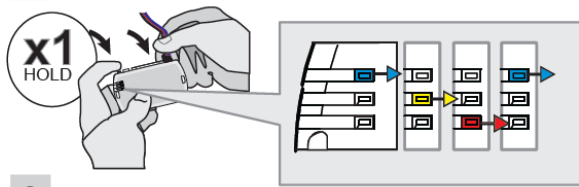
① Behind glove box
Back view, 30-pin
Gray connector



Programming (For Push to Start & Key-Start Vehicles)

Begin with all plugs disconnected from the remote start brain, then perform the programming steps below:

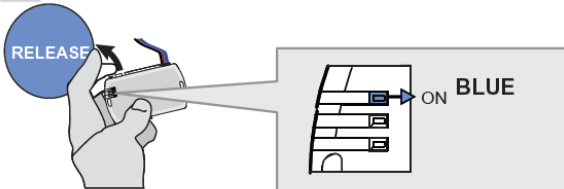
1



Press and hold the programming button:
Insert the 4-Pin (Data-Link) connector.

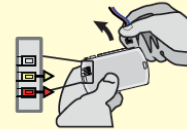
↳ The Blue, Red, Yellow and Blue & Red LEDs will alternatively illuminate.

2

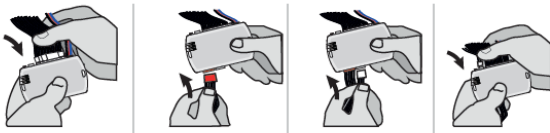


Release the programming button when the LED is BLUE.

If the LED is not solid BLUE disconnect the 4-Pin connector (Data-Link) and go back to step 1.

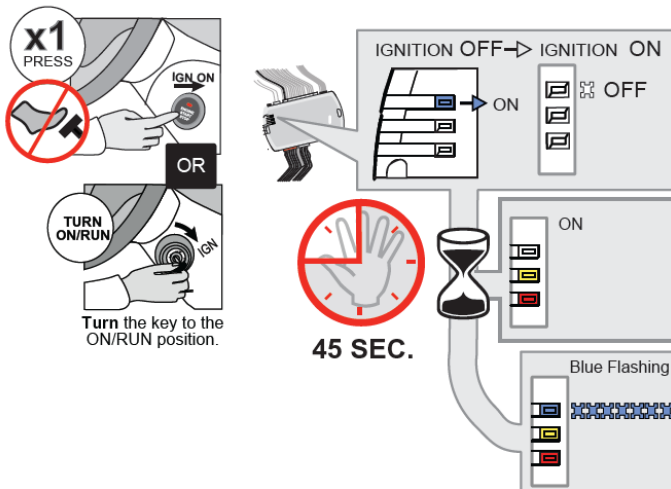


3



Insert the required remaining connectors.

4



Do not press the brake pedal.
Press the Push-to-Start button once to turn on the ignition.

↳ The BLUE LED will turn OFF.

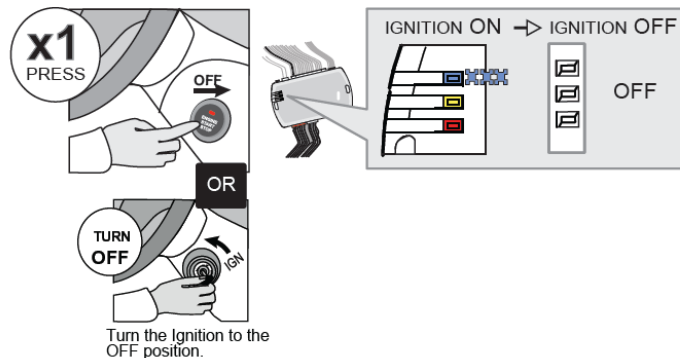
↳ The YELLOW and RED LEDs will turn ON.

Wait, at least 45 seconds, do not disconnect the modules or turn off the ignition.

↳ The RED and YELLOW LEDs ON.

↳ The BLUE LED will flash rapidly.

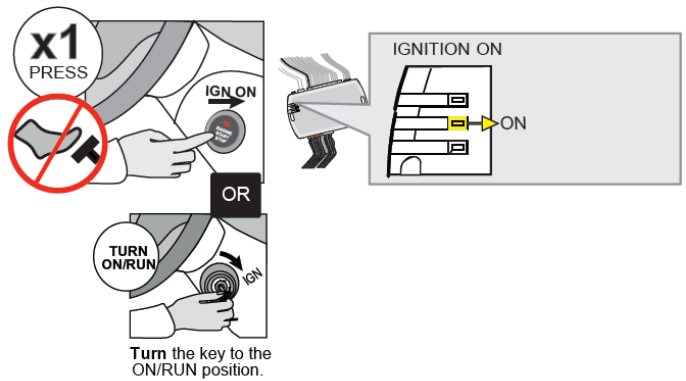
5



Press the Push-to-Start button once to turn off the ignition.

↳ All LED's will turn off.

6

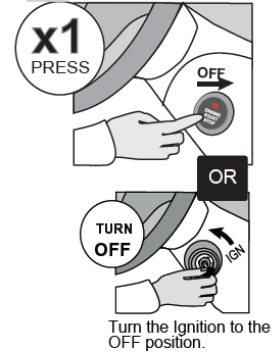


Do not press the brake pedal.
Press the Push-to-Start button once to turn on the ignition.
 ↳ The **YELLOW LED** will turn ON.

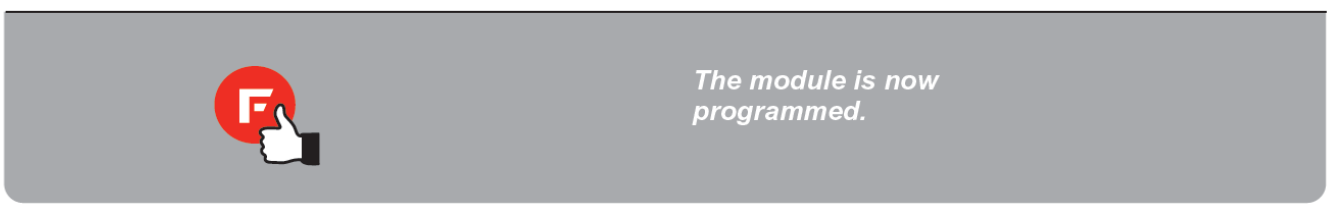
7



8



Press the Push-to-Start button once to turn off the ignition.



Test the System

①

Press Lock>Unlock>Lock on the OEM remote to activate the remote starter.

The vehicle's ignition/accessory circuits will turn on after a few seconds. Another few seconds later the starter motor will engage. It's all about getting the timing down. Lock-1000-Lock-1000-Lock. You will see the Blue light on the remote start module every time you press the Lock button.

②

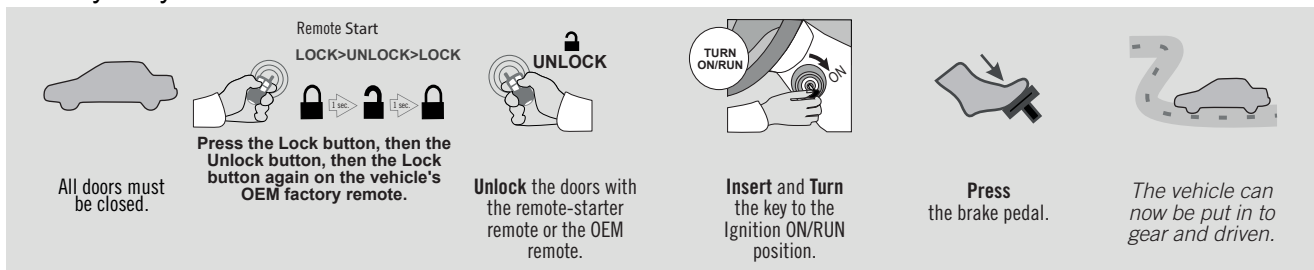


Step on the brake pedal to stop the engine.

Close it Up

Now gather up all of your wiring and neatly bundle it together using zip ties or electrical tape. Find a secure place to put the remote start module and use zip ties to secure it. **Make sure that the remote start wires are not near any moving parts on the steering wheel, pedals or emergency brake!** Re-Install any panels that were removed to gain access to key switch in reverse order they were removed. ENJOY!

Functionality: Key Start Vehicles



Remote Start
LOCK>UNLOCK>LOCK

Press the Lock button, then the Unlock button, then the Lock button again on the vehicle's OEM factory remote.

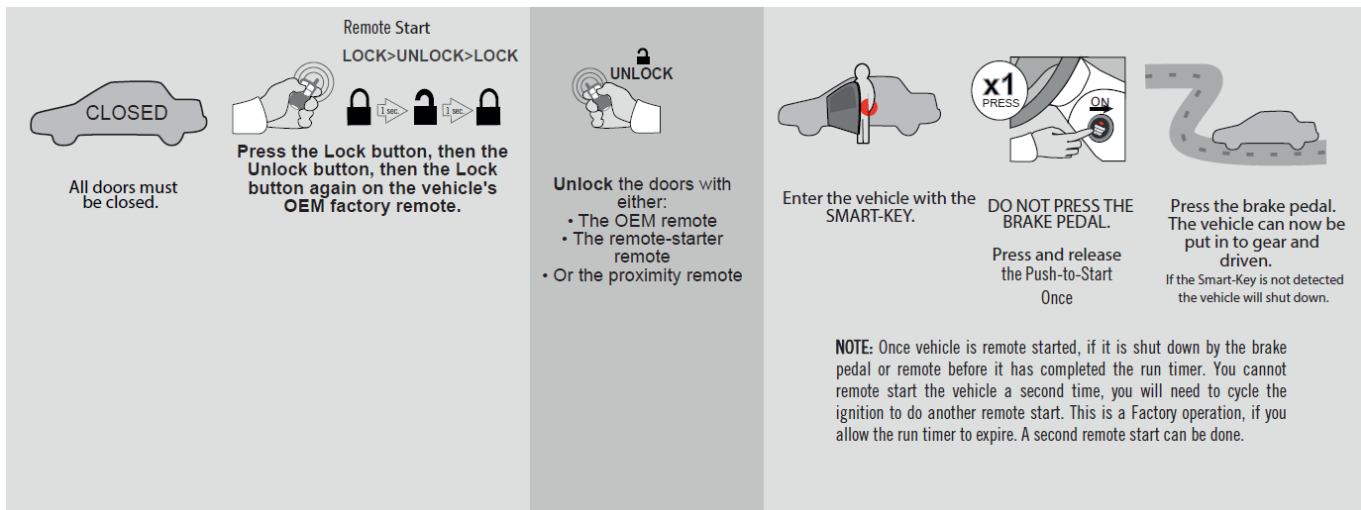
Unlock the doors with the remote-starter remote or the OEM remote.

Insert and Turn the key to the Ignition ON/RUN position.

Press the brake pedal.

The vehicle can now be put in to gear and driven.

Functionality: Push-to-Start Start Vehicles



Remote Start
LOCK>UNLOCK>LOCK

Press the Lock button, then the Unlock button, then the Lock button again on the vehicle's OEM factory remote.

Unlock the doors with either:

- The OEM remote
- The remote-starter remote
- Or the proximity remote

Enter the vehicle with the SMART-KEY.

DO NOT PRESS THE BRAKE PEDAL.

Press and release the Push-to-Start Once

Press the brake pedal. The vehicle can now be put in to gear and driven. If the Smart-Key is not detected the vehicle will shut down.

NOTE: Once vehicle is remote started, if it is shut down by the brake pedal or remote before it has completed the run timer. You cannot remote start the vehicle a second time, you will need to cycle the ignition to do another remote start. This is a Factory operation, if you allow the run timer to expire. A second remote start can be done.

If you have any installation questions or problems, call for tech support

520.579.1531

Copyright 2020 Kleinn Automotive Accessories