

Dodge												
Avenger		08	09	10	11	12	13	14				
Caliber		08	09	10	11	12						
Dakota	07	08	09	10	11							
Durango	07	08	09									
Nitro	07	08	09	10	11							
Jeep												
Compass		08	09	10	11	12	13	14	15	16	17	
Liberty		08	09	10	11	12						
Patriot		08	09	10	11	12	13	14	15	16	17	
Wrangler JK	07	08	09	10	11	12	13	14	15	16	17	18
Chrysler												
200					11	12	13	14				
Aspen	07	08	09									
Sebring		08	09	10								

- This remote start will monitor the vehicle lock circuit and use the pulses generated by pressing lock 3 times on your OEM remote to start the vehicle.

- This is a pre-wired plug and play kit and all the required connections have been made within the harness.

- We have already loaded the correct firmware into the remote start module. You will need to pair the module to your vehicle when the installation is complete. Programming instructions begin on page 3.

STEP 1: Prepare the Vehicle

Locate the transponder plug in the vehicle. This will be either on the steering column or behind the ignition switch on the dash. On vehicles with the ignition switch on the dash it may be easier to remove the radio to access the plug.

Step 2: Make the Connections

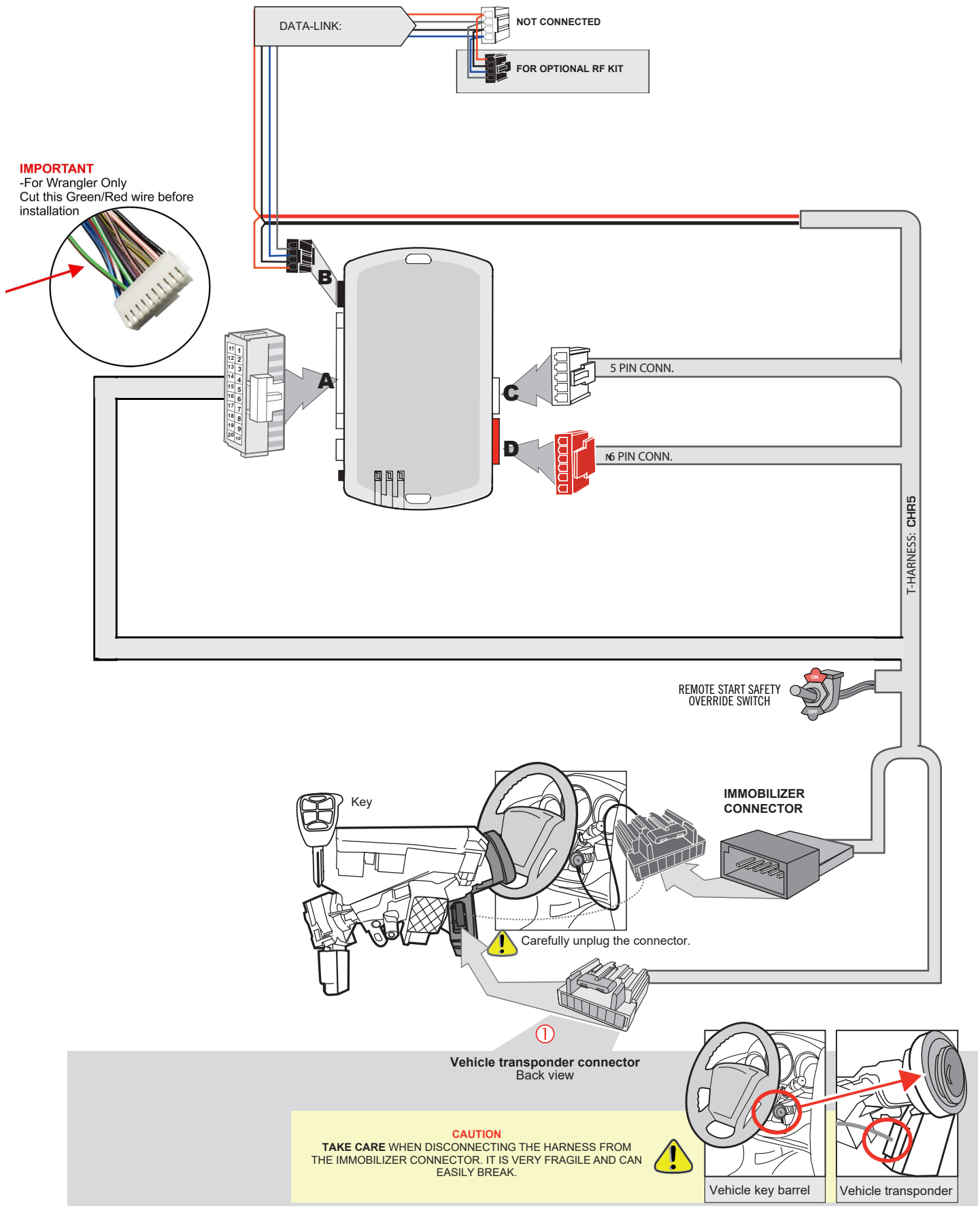
2007-2018 Jeep Wrangler ONLY: Cut the Green/Red wire marked "Cut for Jeep Wrangler ONLY"

All vehicles:

Locate the immobilizer connector at the key cylinder. Carefully disconnect the connector and insert the male plug from the T-harness in its place. Then plug the vehicle immobilizer connector in to the T-harness female connector.

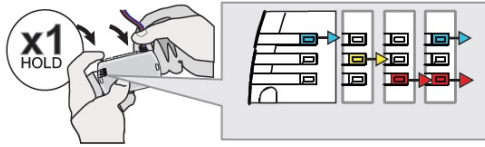
Caution: Be careful when disconnecting the harness from the immobilizer connector in the vehicle. It is very fragile and will break if too much force is used. Kleinn is not responsible for any damage caused by improper removal of the connector.

System Wiring Diagram:



STEP 3: Programming

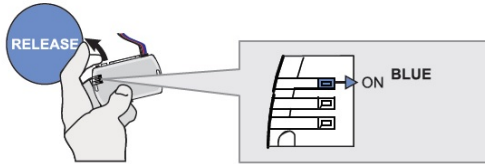
1



Press and hold the programming button:
Connect the 4-PIN Data-link harness (Black connector).

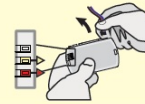
↳ The Blue, Red, Yellow and Blue & Red LEDs will alternatively illuminate.

2

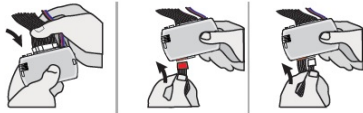


Release the programming button when the LED is BLUE.

If the LED is not solid BLUE disconnect the 4-Pin connector (Data-Link) and go back to step 1.

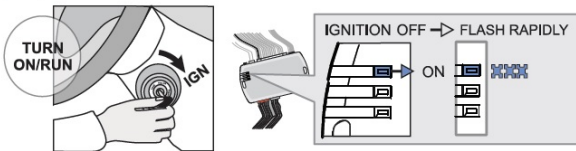


3



Insert the required remaining connectors.

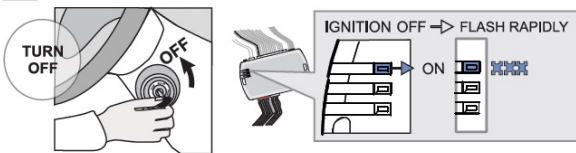
4



Turn the key to the Ignition ON/RUN position.

↳ The BLUE LED will flash rapidly.

5



Turn the key to the OFF position.

↳ The BLUE LED will flash rapidly.

6

With OEM remote



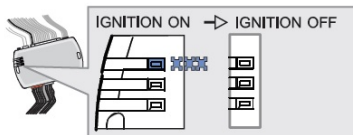
Press the LOCK button on the vehicles OEM remote.

Or

Without OEM remote



Press and release the programming button on the module once.



↳ The BLUE LED will turn off.



The module is now programmed.

Use the remote of the remote starter or security system to test all of the supported features to ensure proper programming.

Step 4: Test the System

Once all wiring and programming are done, you should test the system to make sure everything is working properly before you close up the installation.

①



LOCK 3X

Press the lock button on the OEM remote three times in a row to activate the remote starter.

The vehicles ignition/accessory circuits will turn on after a few seconds. Another few seconds later the starter motor will engage. It's all about getting the timing down. Lock-1000-Lock-1000-Lock. You will see the Blue light on the remote start module every time you press the Lock button.

②



Step on the brake pedal to stop the engine.

REMOTE STARTER FUNCTIONNALITY



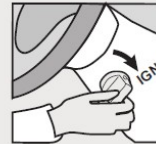
All doors must be closed.



Remote start the vehicle.



Unlock door with remote or key and enter the vehicle.



Insert the key into key switch and turn the key to the on/run position



You may now press the brake to shift into gear and drive the vehicle.

Step 5: Close it Up

Now gather up all of your wiring and neatly bundle it together using zip ties or electrical tape. Find a secure place to put the remote start module and use zip ties to secure it. **Make sure that the remote start wires are not near any moving parts on the steering wheel, pedals or emergency brake!**

Re-Install any panels that were removed to gain access to key switch in reverse order they were removed. ENJOY!

If you have any installation questions or problems, call for tech support

520.579.1531

Copyright 2024 Kleinn Automotive Accessories