



Installation Guide

RSFORD3

Ford F-150 2015-2019 F-250/350/450 2017-2019 F-550 2017-2018



* For automatic transmission vehicles only with Pushbutton OR Key-Start

You may view a high-resolution color version of this guide online at <http://install.kleinn.com/RSFD3> or by scanning this QR code.

-This remote start connects through the gateway plug and activates the factory remote start that is built in to these vehicles but not turned on by the dealership.

-This is a pre-wired plug and play kit. No wire connections are required in to the truck for basic installation. The kit also includes wiring for the optional parking light flash feature. If used, that feature requires three wire connections.

-We have already loaded the correct software into the remote start module. You will need to pair the module to your key when the installation is complete. Instructions begin on page 4.

-Depending on how the vehicle was prepped by the Ford dealer, you may need to bring the truck to the dealer or use a Forscan tool to enable the remote start climate controls on the dash cluster. Once the remote start controls in the dash cluster are enabled, the user can adjust run time and climate control.

Tip #1 – Where Everything Goes

Remote Start Module – the wiring for the module is done under the dash on the driver’s side, so you’ll want to install the module in that general area. Before you start wiring, look for a location where there’s some open space that will fit the module. Pay attention to moving parts like the pedals, e-brake and steering column. Be sure to route your wiring away from those areas.

STEP 1: Check for OEM hood pin.

Visually inspect the hood latch assembly and locate the wiring connector that plugs in to the factory hood pin. If the connector is plugged in to the hood latch assembly, the vehicle has a factory hood pin and you can proceed to Step 2. If the connector is not plugged in, then there is no factory hood pin and you will need to use the small red jumper provided with the kit to short the two terminals inside the connector.



STEP 2: Connect the remote start harness to the Gateway Plug

Reach behind the OBD2 port and release the locking tabs that hold the Gateway Plug into the back of the OBD2 port. Insert the male Gateway Plug you just removed in to the female receptacle on the Kleinn remote start harness. Then insert the male connector from the Kleinn harness back in to the rear of the OBD2 port. Basic wiring is now complete.

STEP 3 (Optional): Connect the parking lights. This feature will illuminate the parking lights while the vehicle is running on the remote start.

Parts Required

- White 20-Pin Connector "A"
- Red 6-Pin Connector "B"

Follow these simple wiring steps:

Locate the 14-pin black connector behind the vehicle parking light switch

- Attach the Green/Red wire from the remote start White 20-Pin connector on to the Grey wire at pin position 11 on the parking light switch connector. Do not cut the wire in the vehicle - just do a 'tap on' connection.
- Locate the Black/Purple wire at pin position 4 on the parking light switch connector. You will need to cut this wire and make butt-connections on to both ends - so make sure to leave enough wire to work with on both sides of your cut.
- Butt-connect the Yellow/Red wire from the remote start 6-pin Red connector to the end of the cut Black/Purple wire that is going to the parking light switch connector.
- Butt-connect the Yellow/Green wire from the remote start 6-pin Red connector to the remaining end of the cut Black/Purple wire.

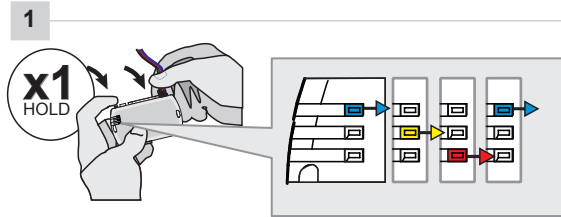
STEP 4: Programming

Programming instructions for Key-Start trucks are on Page 4.

Programming instructions for Push-to-Start trucks are on Page 5.

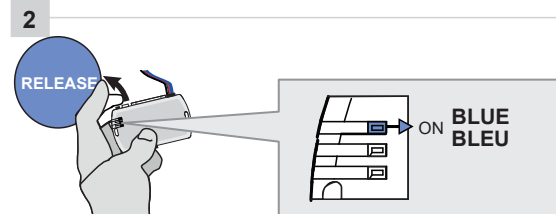
Programming (For Key-Start Vehicles)

Begin with all plugs disconnected from the remote start brain, then perform the programming steps below:



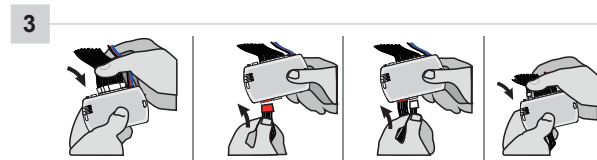
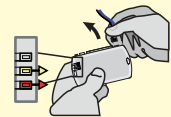
Press and hold the programming button:
Insert the 4-Pin (Data-Link) connector.

↳The Blue, Red, Yellow and Blue & Red LEDs will alternatively illuminate.

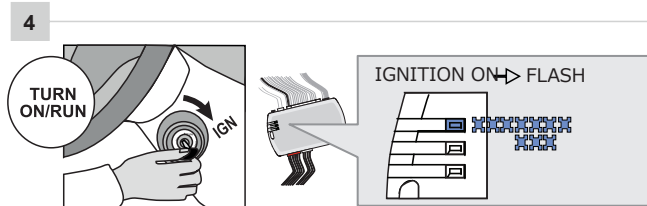


Release the programming button when the LED is BLUE.

If the LED is not solid BLUE disconnect the 4-Pin connector (Data-Link) and go back to step 1.

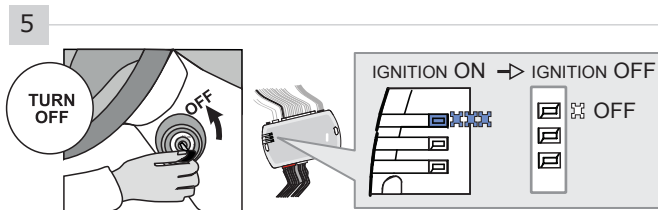


Insert the required remaining connectors.



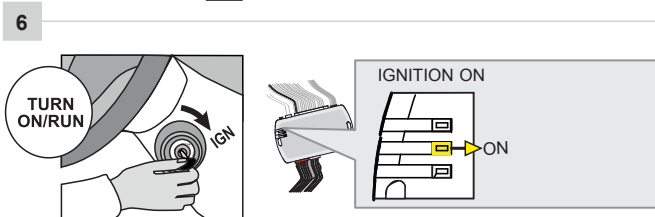
Turn the key to the Ignition ON/RUN position.

↳ The BLUE LED will flash rapidly.



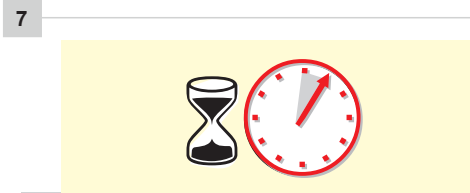
Turn the key to the OFF position.

↳ The BLUE LED will turn off.

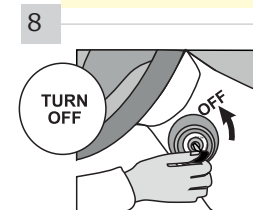


Turn the key to the Ignition ON/RUN position.

↳ The YELLOW LED will turn ON.



Wait 5 seconds.



Turn the key to the OFF position.
Programming is complete

Programming (For Push-to-Start Vehicles)

Begin with all plugs disconnected from the remote start brain, then perform the programming steps below:

1

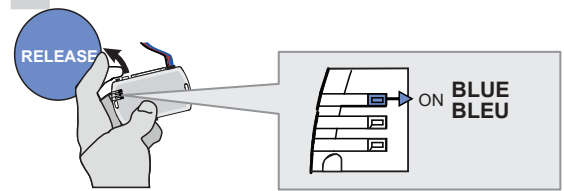


x1 HOLD

Press and hold the programming button:
Insert the 4-Pin (Data-Link) connector.

↳ The Blue, Red, Yellow and Blue & Red LEDs will alternatively illuminate.

2

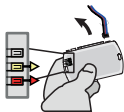


RELEASE

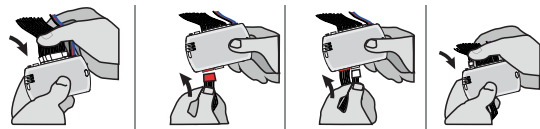
Release the programming button when the LED is BLUE.

ON BLUE BLEU

If the LED is not solid BLUE disconnect the 4-Pin connector (Data-Link) and go back to step 1.

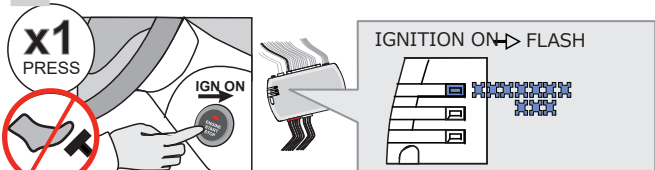


3



Insert the required remaining connectors.

4



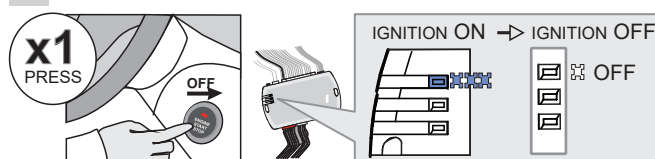
x1 PRESS

IGNITION ON → FLASH

Do not press the brake pedal.
Press the Push-to-Start button once to turn on the ignition.

↳ The BLUE LED will flash rapidly.

5



x1 PRESS

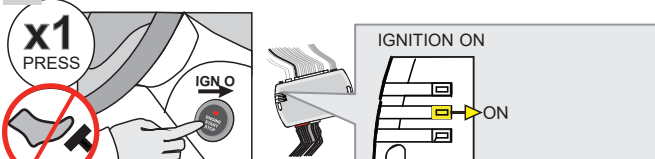
IGNITION ON → IGNITION OFF

OFF

Press the Push-to-Start button once to turn off the ignition.

↳ The BLUE LED will turn off.

6



x1 PRESS

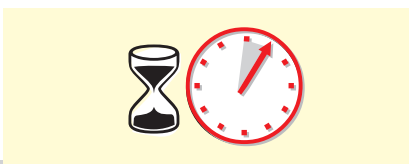
IGNITION ON

ON

Do not press the brake pedal.
Press the Push-to-Start button once to turn on the ignition.

↳ The YELLOW LED will turn ON.

7



Wait 5 seconds.

8



x1 PRESS

OFF

Press the Push-to-Start button once to turn off the ignition. Programming is complete

Test the System

①

Press Lock>Unlock>Lock on the OEM remote to activate the remote starter.

The vehicle's ignition/accessory circuits will turn on after a few seconds. Another few seconds later the starter motor will engage. It's all about getting the timing down. Lock-1000-Lock-1000-Lock. You will see the Blue light on the remote start module every time you press the Lock button.

②









Step on the brake pedal to stop the engine.




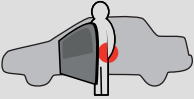


Close it Up

Now gather up all of your wiring and neatly bundle it together using zip ties or electrical tape. Find a secure place to put the remote start module and use zip ties to secure it. **Make sure that the remote start wires are not near any moving parts on the steering wheel, pedals or emergency brake!** Re-Install any panels that were removed to gain access to key switch in reverse order they were removed. ENJOY!

Functionality: Key Start Vehicles

					
All doors must be closed.	Remote start the vehicle.	Unlock the doors with the remote-starter remote or the OEM remote.	Insert and Turn the key to the Ignition ON/RUN position.	Press the brake pedal.	The vehicle can now be put in to gear and driven.

Functionality: Push-to-Start Start Vehicles

					
All doors must be closed.	Remote start the vehicle.	Unlock the doors with either: <ul style="list-style-type: none">• The OEM remote• The remote-starter remote• Or the proximity remote	Enter the vehicle with the SMART-KEY.	DO NOT PRESS THE BRAKE PEDAL. Press and release the Push-to-Start button once.	Press the brake pedal. The vehicle can now be put in to gear and driven. If the Smart-Key is not detected the vehicle will shut down.

If you have any installation questions or problems, call for tech support

520.579.1531

Copyright 2020 Kleinn Automotive Accessories