

Chevrolet					
Avalanche	03	04	05	06	
Express	03	04	05	06	07
Silverado 1500	03	04	05	06	
Silverado 1500 Classic					07
Silverado 2500	03	04	05	06	
Silverado 2500 Classic					07
Silverado 3500	03	04	05	06	
Silverado 3500 Classic					07
Suburban	03	04	05	06	
Tahoe	03	04	05	06	

GMC					
Savana	03	04	05	06	07
Sierra 1500	03	04	05	06	
Sierra 1500 Classic					07
Sierra 2500	03	04	05	06	
Sierra 2500 Classic					07
Sierra 3500	03	04	05	06	
Sierra 3500 Classic					07
Yukon	03	04	05	06	
Cadillac					
Escalade	03	04	05	06	
Escalade EXT	03	04	05	06	

Overview

There are 6 basic steps to this remote start installation. We're going to address each of these:

1. Prepare the vehicle
2. Make your wiring connections
3. Pair the remote start to the vehicle
4. Pair the remotes to the remote starter
5. Test the system
6. Button it up!

STEP 1: Prepare the Vehicle

Begin by removing the lower dash panel and then the plastic around the steering wheel column.

Be careful not to break the panel –especially in cold weather.

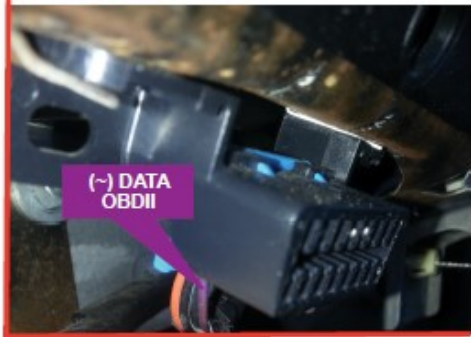
Step 2: Make the Connections

There are 3 connections to this installation.

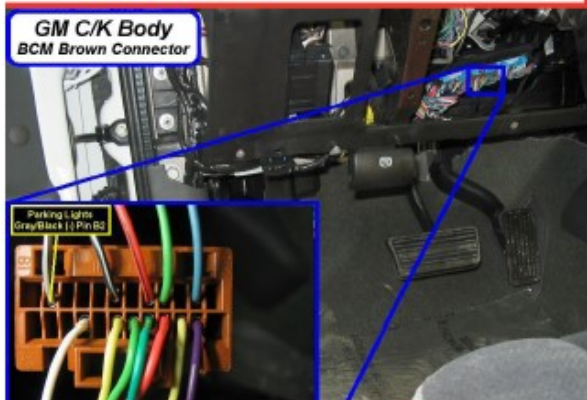
1. Unbolt the factory OBD plug from the vehicle and the plug it into the OBD t harness. Next mount the new OBD end where the factory OBD was.
2. Unplug the factory ignition switch plug and plug it into the t harness. Plug the male end of the t harness into the ignition switch.
3. Connect the brake wire from the t harness to the brake wire in the vehicle.



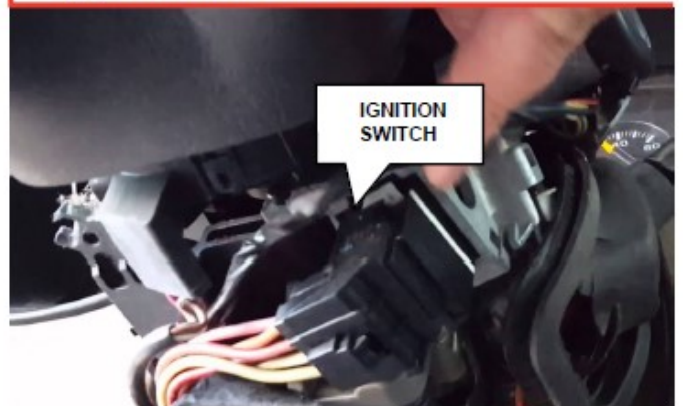
② OBDII CONNECTOR



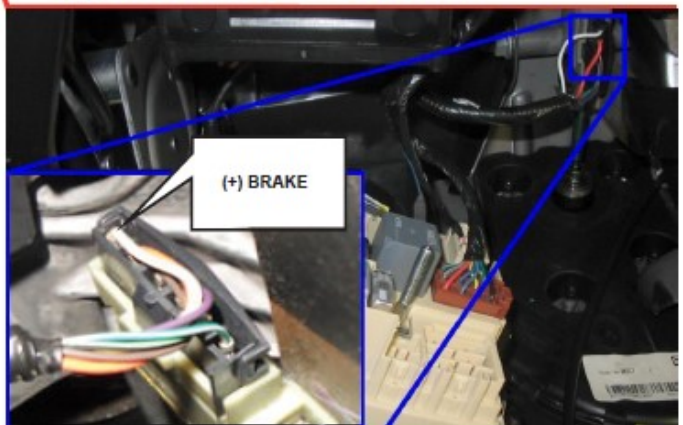
④ PARKING LIGHTS



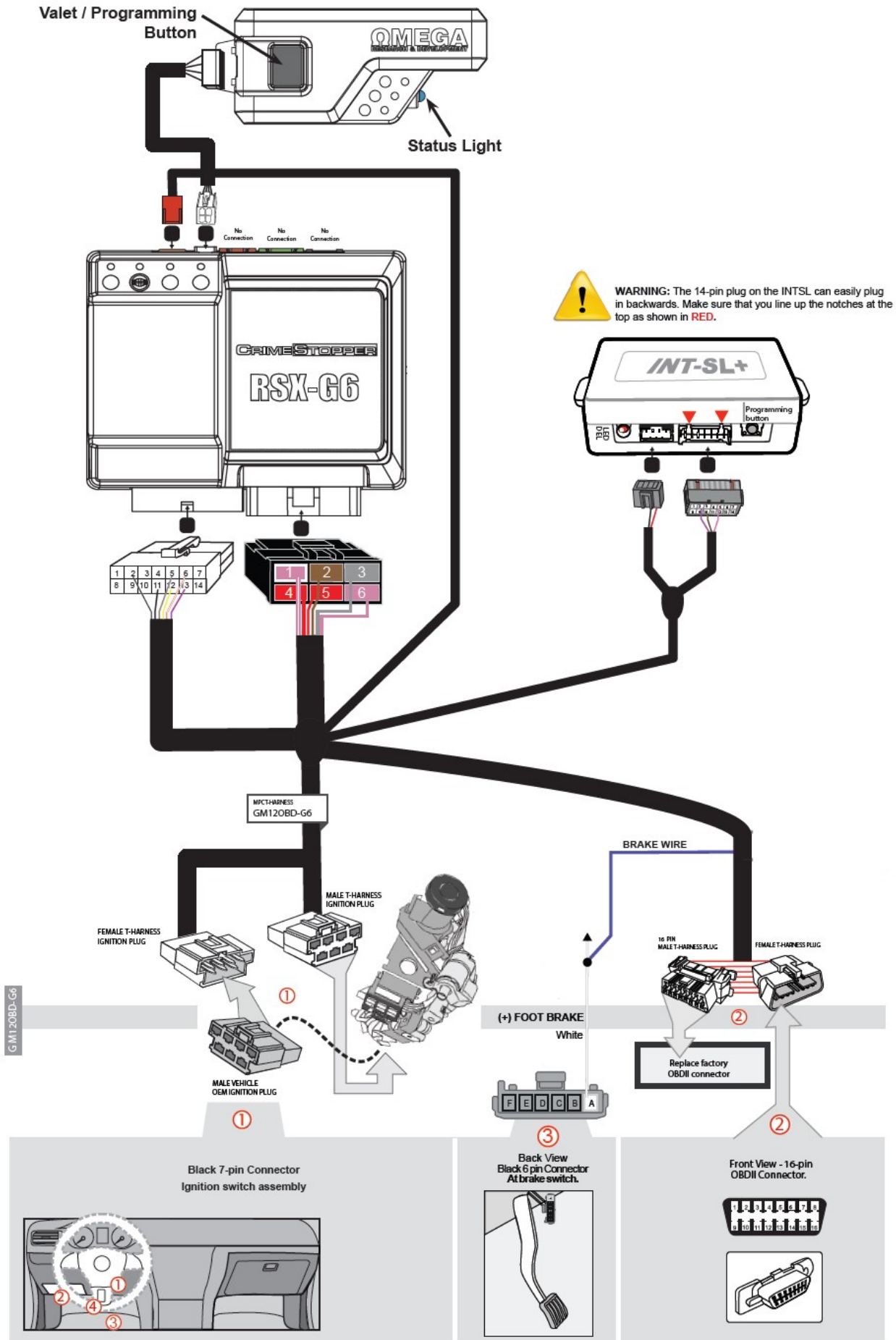
① IGNITION SWITCH CONNECTOR



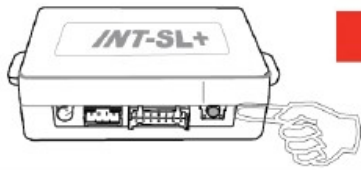
③ AT BRAKE SWITCH CONNECTOR



System wiring diagram

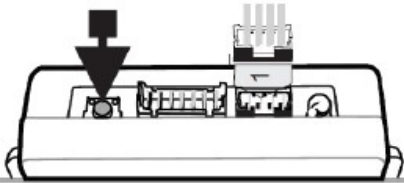


STEP 3: Programming



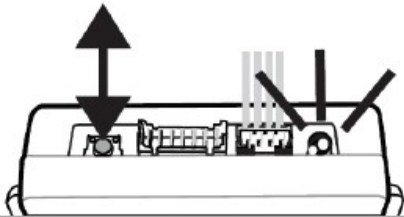
INTSL Module Programming Procedure:

1



Press and hold the programming button as you insert the 4-pin connector into the INTSL.

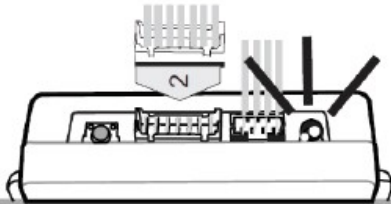
2



The LED will turn on solid, indicating the beginning of programming.

Release the programming button.
LED will remain lit solid.

3

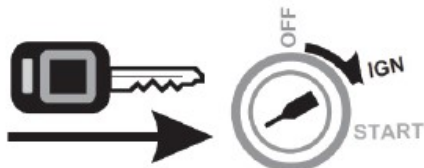


Insert the 14-pin connector into the INTSL.
NOTE: 14-pin connector can be easily plugged in backwards.

If the LED is not solid RED unplug the connectors, check +12 volt & Ground connections, and go back to step 1.

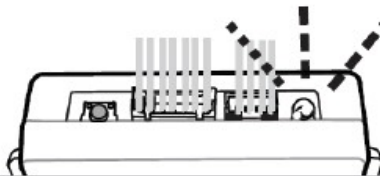


4



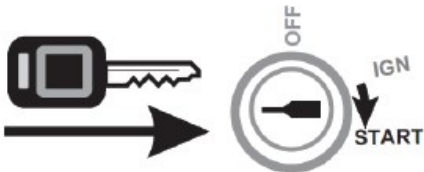
Turn the key on to the ignition position.
Do not turn the key to the start position yet.

5



The LED will flash.
(Note: Some vehicle can take 60 seconds before the LED flash)

6



Turn the key to the next position forward (start position) to start the vehicle.

7



The LED will turn off.

If the LED remains lit solid RED unplug the connectors, check CAN DATA & IGNITION connections, and go back to step 1.



8



Turn the key OFF.



The module is now programmed.

CRIMESTOPPER G6 PROGRAMMING PROCEDURE FEATURE: ENGINE DETECTION "TACH" LEARN

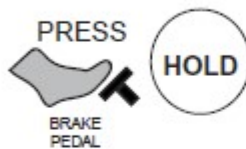
1



START the vehicles engine.
(the engine must be running and producing a tachometer signal).

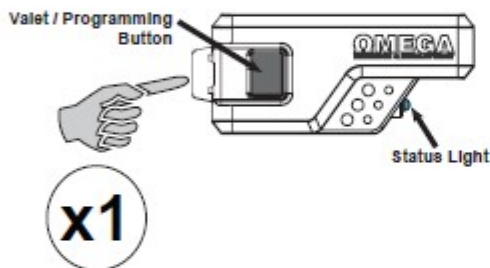
NOTE: Your Data module learn procedure must be completed prior to the Tach learn programming.

2



PRESS and **HOLD** the Brake pedal. Continue holding down the Brake pedal throughout the programming steps.

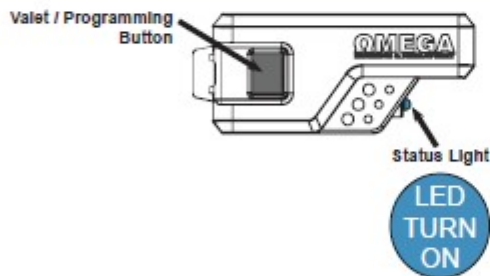
3



PRESS the Valet/Program button on the Antenna **1x**.

You will hear **5clicks** from the remote start brain.
(if connected, parking lights will flash)

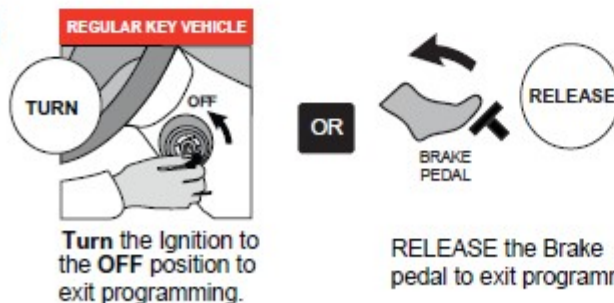
4



The LED status light will **TURN ON** when the tach signal has been learned.

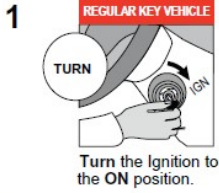
If LED does not come on, check tach wire connection or Data connection and try again.

5

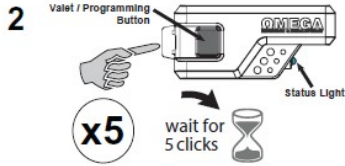


The Crimestopper remote starter is now programmed
for engine detection Tach mode

**CRIMESTOPPER G6 PROGRAMMING PROCEDURE
OPTION FEATURE #15 REMOTE START RUN TIME**



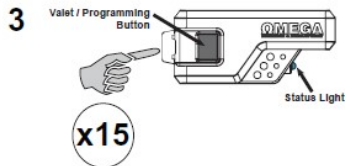
Turn the vehicle Ignition "ON".
(do not start the engine)



PRESS the Valet/Program button on the Antenna **5x** within 5 seconds of step 1.

Shortly after pressing the button 5x, you will hear **5clicks** from the remote start brain. (if connected, parking lights will flash)

You have entered Feature Options Programming mode.



PRESS the Valet/Program button on the Antenna again another **15x**.

You will hear a click on each press for a total of **15 clicks** from the remote start brain. (if connected, parking lights will flash)

Select your desired Run Time from Step 4.



PRESS the LOCK button on remote **1x**. You will hear **1clicks** from the remote start brain. (if connected, parking lights will flash)

This will set the remote start run time of 3 min



PRESS the UNLOCK button on remote **1x**. You will hear **2clicks** from the remote start brain. (if connected, parking lights will flash)

This will set the remote start run time of 10 min



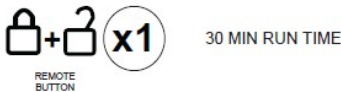
PRESS the Trunk button on remote **1x**. You will hear **3clicks** from the remote start brain. (if connected, parking lights will flash)

This will set the remote start run time of 15 min



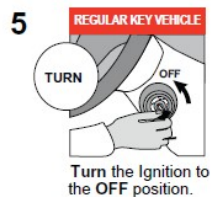
PRESS the START button on remote **1x**. You will hear **4clicks** from the remote start brain. (if connected, parking lights will flash)

This will set the remote start run time of 20 min
(DEFAULT SETTING)



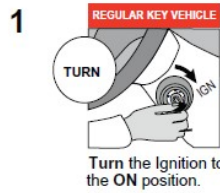
PRESS the Lock + Unlock buttons on remote **1x**. You will hear **5clicks** from the remote start brain. (if connected, parking lights will flash)

This will set the remote start run time of 30 min

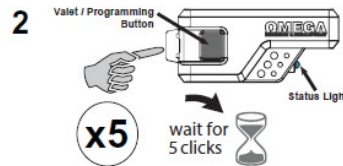


Turn the vehicles Ignition "OFF" to exit the Feature Options Programming mode.

**CRIMESTOPPER G6 PROGRAMMING PROCEDURE
OPTION FEATURE #5 CRANK DELAY TIME**



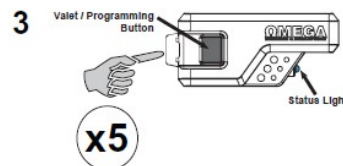
Turn the vehicle Ignition "ON".
(do not start the engine)



PRESS the Valet/Program button on the Antenna **5x** within 5 seconds of step 1.

Shortly after pressing the button 5x, you will hear **5clicks** from the remote start brain. (if connected, parking lights will flash)

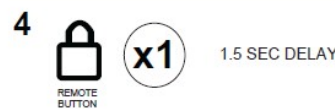
You have entered Feature Options Programming mode.



PRESS the Valet/Program button on the Antenna again another **5x**.

You will hear a click on each press for a total of **5 clicks** from the remote start brain. (if connected, parking lights will flash)

Select your desired Crank delay time from one the Steps below.



PRESS the LOCK button on remote **1x**. You will hear **1clicks** from the remote start brain. (if connected, parking lights will flash)

This will set the start delay time of 1.5 sec
(DEFAULT SETTING)



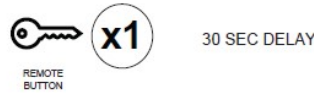
PRESS the UNLOCK button on remote **1x**. You will hear **2clicks** from the remote start brain. (if connected, parking lights will flash)

This will set the start delay time of 15 sec



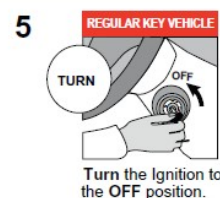
PRESS the Trunk button on remote **1x**. You will hear **3clicks** from the remote start brain. (if connected, parking lights will flash)

This will set the start delay time of 20 sec



PRESS the START button on remote **1x**. You will hear **4clicks** from the remote start brain. (if connected, parking lights will flash)

This will set the start delay time for 30 sec



Turn the vehicles Ignition "OFF" to exit the Feature Options Programming mode.



The Crimestopper remote starter is now programmed for the selected Diesel Crank Delay time.



The Crimestopper remote starter is now programmed for the selected remote start run time.

Step 4: Pair the remotes to the remote starter

CRIMESTOPPER G6 PROGRAMMING PROCEDURE PROGRAMMING 4-BUTTON REMOTE

1

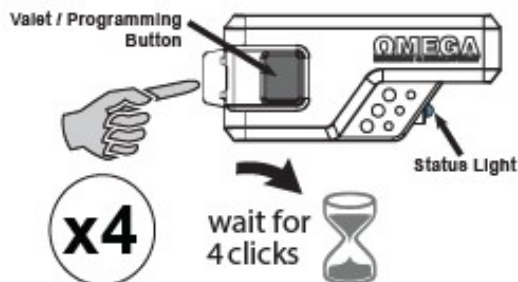


Turn the Ignition to the ON position.

NOTE: BEFORE YOU BEGIN, Have all remotes that you want to operate this system on hand to continue remote programming. Any remotes not present during programming will be erased from the system.

Turn the vehicle Ignition "ON".
(do not start the engine)

2



PRESS the Valet/Program button on the Antenna 4x within 5 seconds of step 1.

Shortly after pressing the button 4x, you will hear 4clicks from the remote start brain. (if connected, parking lights will flash)

You have entered Remote Programming mode.

3



PRESS the LOCK button on remote 1x on each remote one after the other. The remote start brain will click 1-4 times for each remote learned. (if connected, parking lights will flash)

NOTE: ONLY 4 remotes can be programmed in to the the remote start system.

5



Turn the Ignition to the OFF position.

Turn the vehicles Ignition "OFF" to exit the Remote Programming mode.



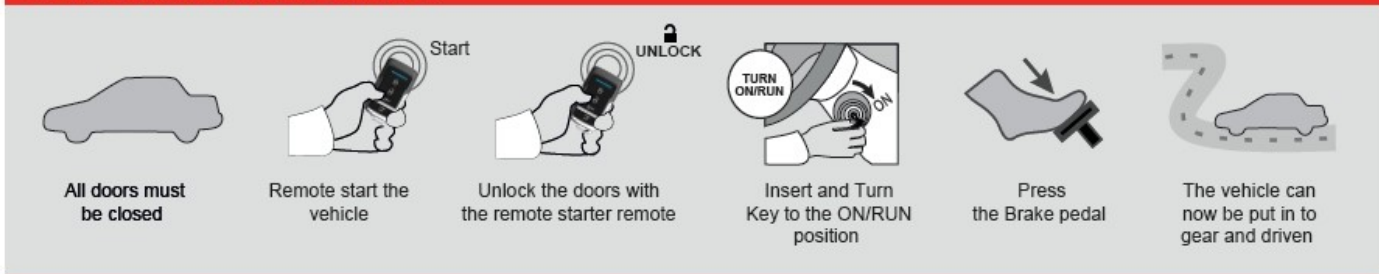
The Crimestopper remote starter is now programmed to the 4- Button remotes.

Step 5: Test the System

Once all wiring and programming are done, you should test the system to make sure everything is working properly before you close up the installation.

USING THE REMOTE CONTROL

REMOTE STARTER FUNCTIONALITY



KEYLESS ENTRY, & CONVENIENCE FUNCTIONS

FUNCTION	4 BUTTON	NOTE
Lock		Locks vehicle doors.
Unlock		Unlocks vehicle doors.
Engine Start/Stop	0.8 Sec	Activate Remote Start. Key Take Over: Turn ignition to 'ON' position (not start), press brake pedal.

Step 6: Close it Up

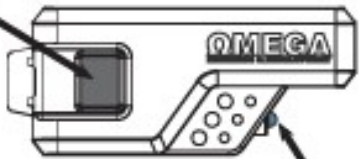
Now gather up all of your wiring and neatly bundle it together using zip ties or electrical tape. Find a secure place to put the remote start module and use zip ties to secure it. **Make sure that the remote start wires are not near any moving parts on the steering wheel, pedals or emergency brake!** Re-Install any panels that were removed to gain access to key switch in reverse order they were removed. ENJOY!

If you have any installation questions or problems, call for tech support
520.579.1531

Copyright 2024 Kleinn Automotive Accessories

G6-RS4 4-Button Remote Operation



REPLACING YOUR REMOTE BATTERY		
STEPS	REMOTE PART#	BATTERY (QTY)
1) Find the part # on the back of the remote to identify the battery. 2) Remove the screw (#0) from the back of the remote. 3) Gently pry the case halves apart to access & replace the battery.	1415 & 1417	CR2016 (2)
KEYLESS ENTRY, & CONVENIENCE FUNCTIONS		
FUNCTION	4 BUTTON	NOTE
Lock	🔒	Locks vehicle doors.
Unlock	🔓	Unlocks vehicle doors.
Engine Start/Stop	🔑 0.8 Sec	Activate Remote Start. Key Take Over: Turn ignition to 'ON' position (not start), press brake pedal.
Run Time Extender	🔑 , x 1 during RS	The system will restart the internal run timer.
Pit Stop Mode	With engine running after starting with key for more than 10 seconds: Press the 🔑 from the remote.	This will leave the engine running for the programmed run time. You can Lock the vehicle with your remote so you can take your keys with you to run errands.
Valet Mode	Turn Ignition "ON", Press and Hold Valet Button on Antenna for 5 Sec.	This disables remote start and the security system. The status LED will turn on. Repeat this process to exit valet mode. <div style="display: flex; align-items: center; justify-content: center;"> <div style="margin-right: 10px;">Valet / Programming Button</div>  </div> <div style="text-align: right; margin-top: 5px;">Status Light</div>