

Nissan (Push to Start)											
Altima	13	14	15	16	17	18					
Frontier								20	21	22	23
Maxima				16	17	18	19	20	21	22	23
Murano			15	16	17	18	19	20	21	22	23
Pathfinder	13	14	15	16	17	18	19	20			
Titan				16	17	18	19	20	21	22	23
Titan Diesel				16	17	18	19	20	21	22	23
Infiniti											
JX35	13	14									
Q50		14	15	16	17	18	19	20			
Q50 Hybrid		14	15	16	17	18	19	20			
Q50 2.0T				16	17	18	19	20			
Q60 2.0T					17	18	19	20			
QX60		14	15	16	17	18	19	20			

-This remote start will monitor the vehicle lock circuit and use the pulses generated by pressing lock 3 times on your OEM key FOB to remote start the vehicle.

-This is a pre-wired plug and play kit. No wire connections are required into the vehicle for basic installation.

-We have already loaded the correct firmware into the remote start module. You will need to program the module to your vehicle when the wiring is completed then perform Dcryptor programming on your Windows PC or Laptop.

-AC may not work while remote started on some vehicles.

Overview

There are 7 basic steps to this remote start installation. We're going to address each of these:

1. Download and install Flash Link Manager software.
2. Locate the BCM, see pages 2 and 3 for vehicle specific locations.
3. Make your plug-in connections shown in the system wiring overview.
4. Program the remote start to the vehicle.
5. Complete the Dcryptor programming.
6. Test the system.
7. Button it up!

Step 1: Download and install Flash Link Manager software

**The Flash Link Manager (FLM) software only works on a Windows computer.

Enter the following link into your web browser, then download and install the software:

<https://fortin.ca/en/support/flashlinkmanager.html>

Next, open the software and log in with the following credentials: **email: flash@kleinn.com password: Flash2020**

Once the (FLM) software installed and open, then connect the Flash Link Updater (FLU) to the USB port of your Windows computer. The (FLM) software will detect (FLU) and display a message that says **(The module is not connected to the Flashlink Updater)**, this is normal.

Next plug the EVO module into the (FLU) tool. For a video on how to complete these steps visit: www.kleinn.com/flashlink

Locate the BCM

NISSAN & INFINITI VEHICLE SPECIFIC BCM LOCATION

BCM Located in the passenger kick panel

Infiniti
2014-2020 Q50
2014-2020 Q50 HYBRID
2016-2020 Q50 2.0T
2017-2020 Q60 2.0T



BCM Located right side of steering column

Nissan
2020-2023 Frontier
2016-2023 Titan
2016-2023 Titan Diesel



BCM Located behind the Instrument Cluster

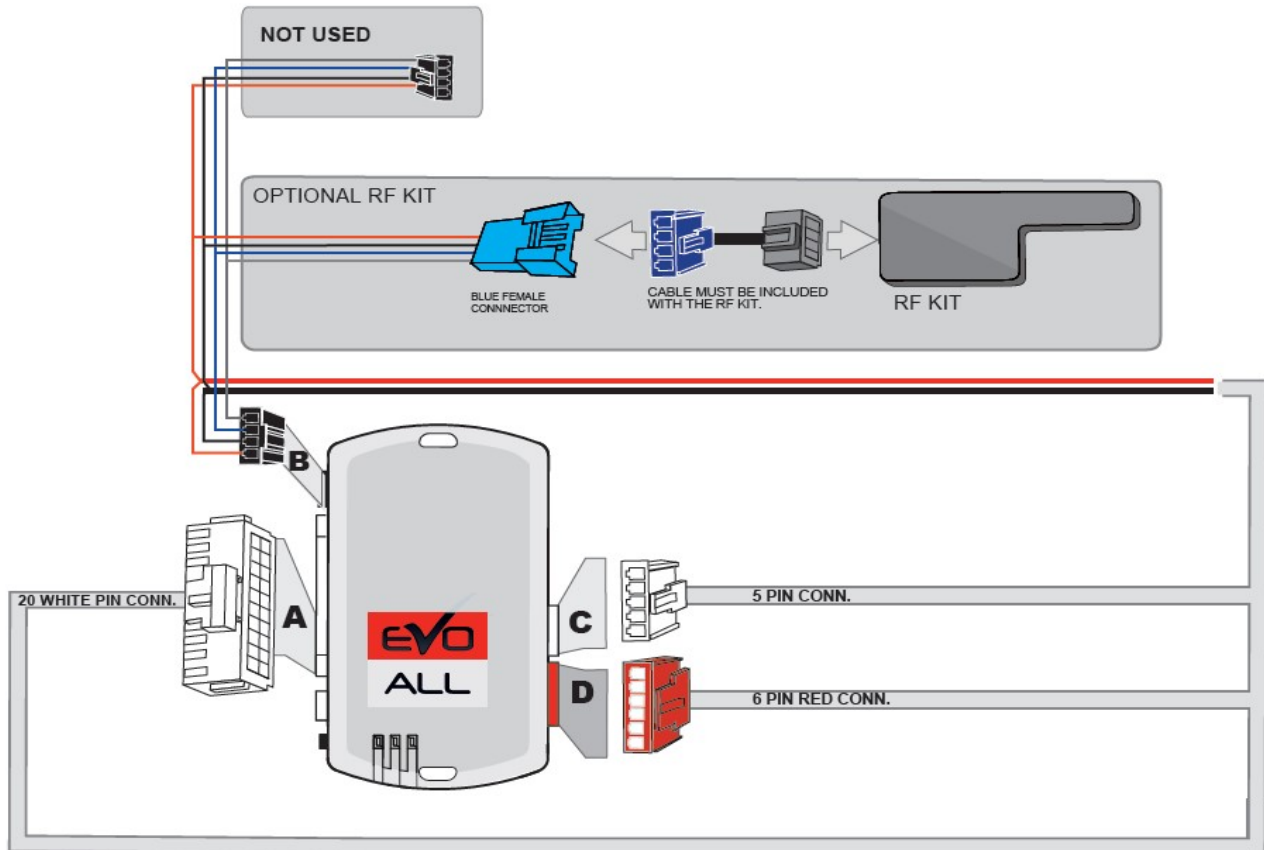
Nissan
2013-2018 Altima
2016-2023 Maxima
2015-2023 Murano
2013-2020 Pathfinder

Infiniti
2013-2014 JX35
2014-2020 QX60



Step 2: Make the connections

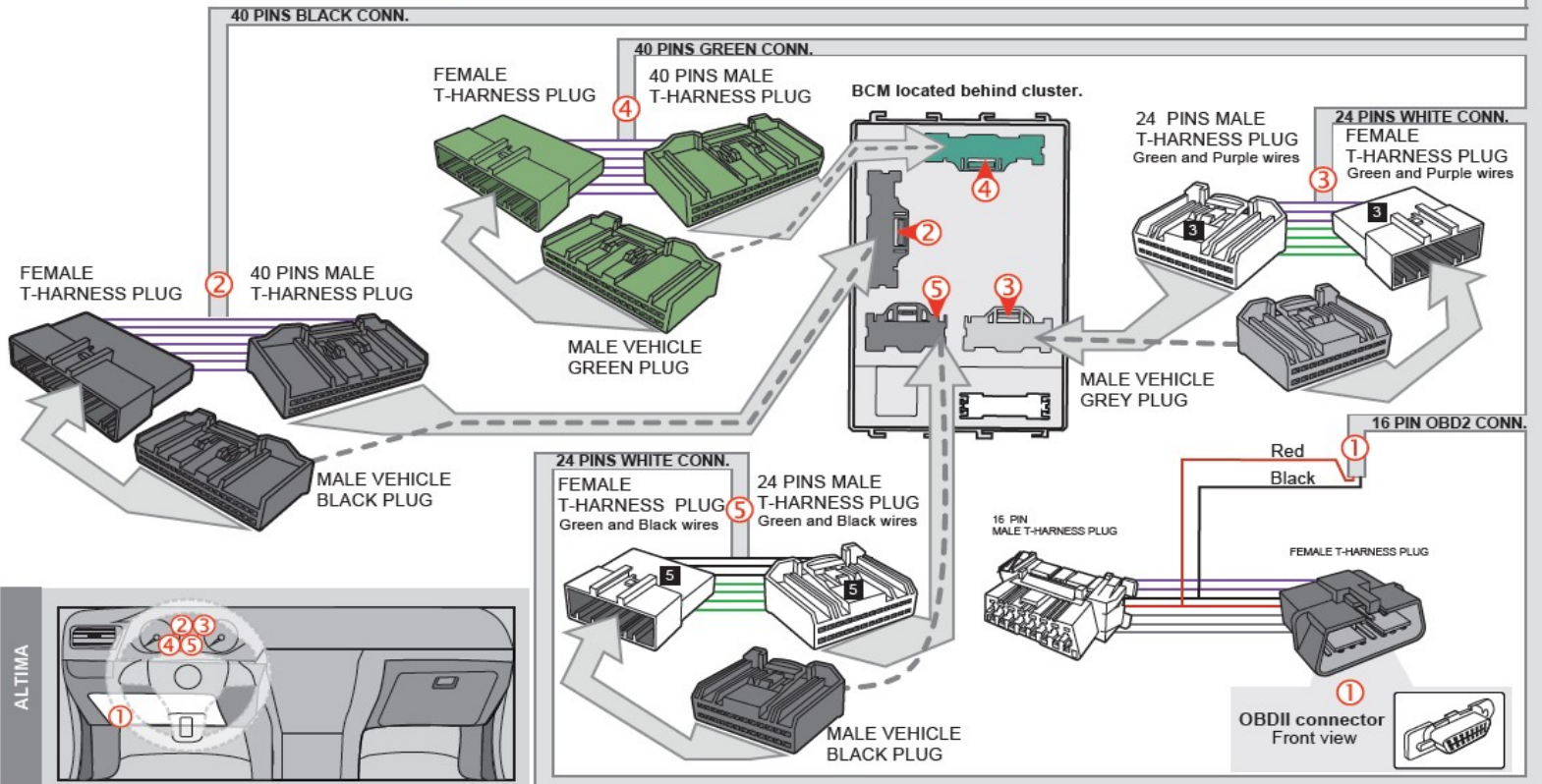
System Wiring Diagram



NOTE

WHITE 24-PIN CONNECTOR ③ WILL PLUG IN TO THE GRAY PLUG PORT ON THE BCM.
 WHITE 24-PIN CONNECTOR ⑤ WILL PLUG IN TO THE BLACK PLUG PORT ON THE BCM.

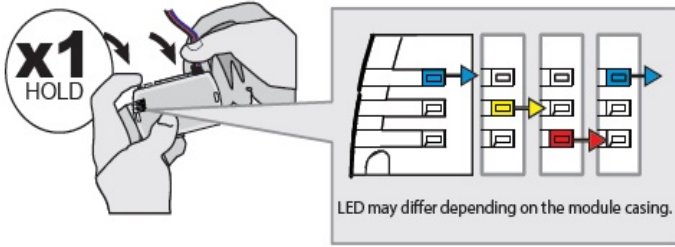
T-HARNESS
THAR-NISS4



ALTIMA

Step 3: Programming

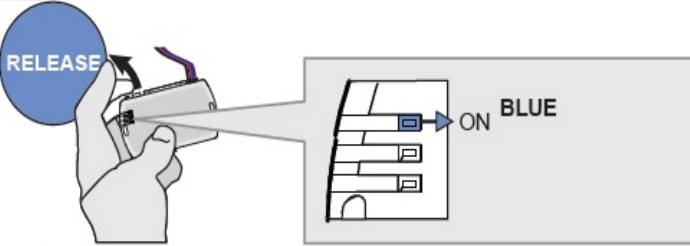
1



Press and hold the programming button:
Connect the 4-PIN Data-link harness (Black connector).

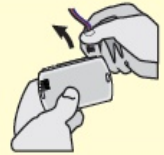
↳ The Blue, Red, Yellow and Blue & Red LEDs will alternatively illuminate.

2

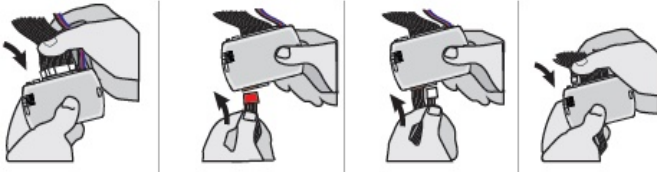


Release the programming button when the Blue LED is ON.

If the LED are not solid BLUE disconnect the 4-PIN Data-link harness (Black connector) and go back to step 1.

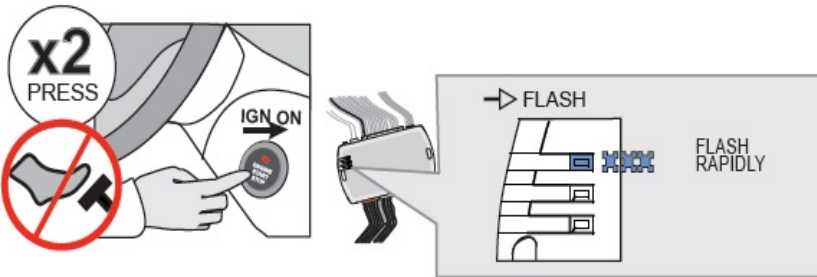


3



Connect the required remaining harnesses.

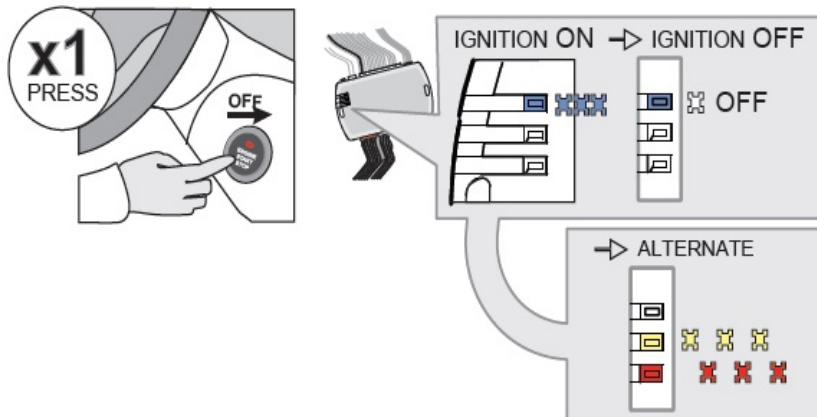
4



Do not press the brake pedal. **Press** the Push-to-Start button twice to turn ON the ignition.

↳ The BLUE LED will flash rapidly.

5



Press the Push-to-Start button once to turn off the ignition.

↳ The BLUE LED will turn off.

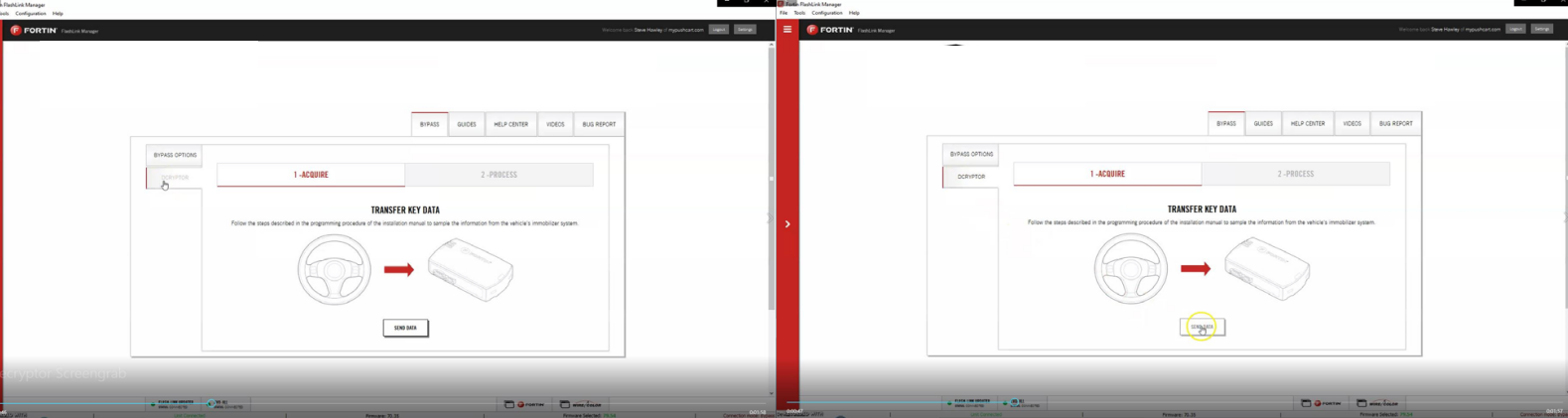
↳ The RED and YELLOW LEDs will alternated.

Step 4: Dcryptor

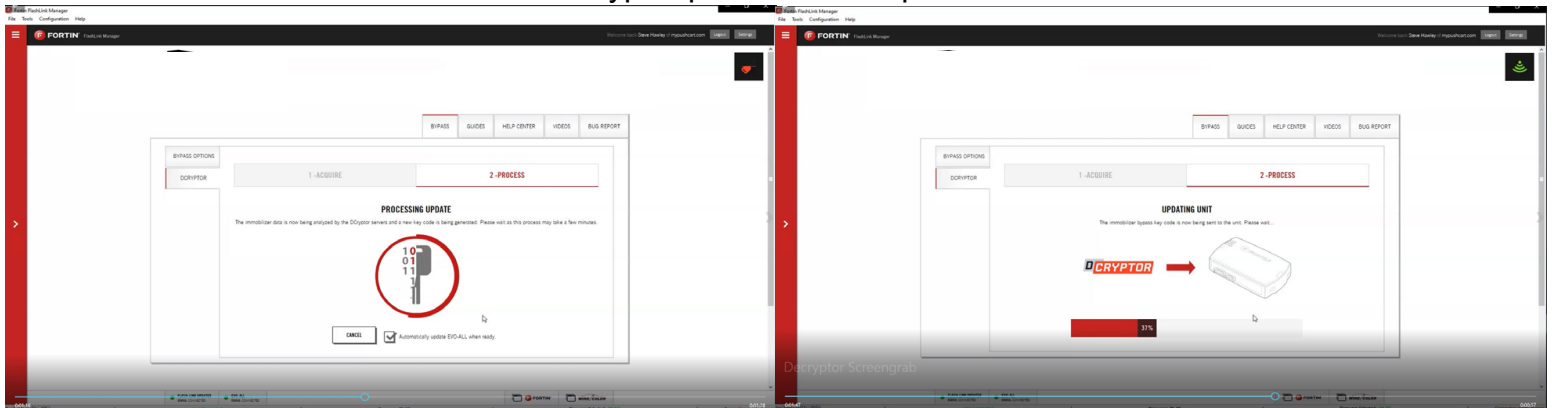
Next, it's time to bring the remote starter module to your computer and plug it into the supplied four-pin plug from the Flashlink Updater (FLU). For a video on how to do these steps visit: www.kleinn.com/flashlink



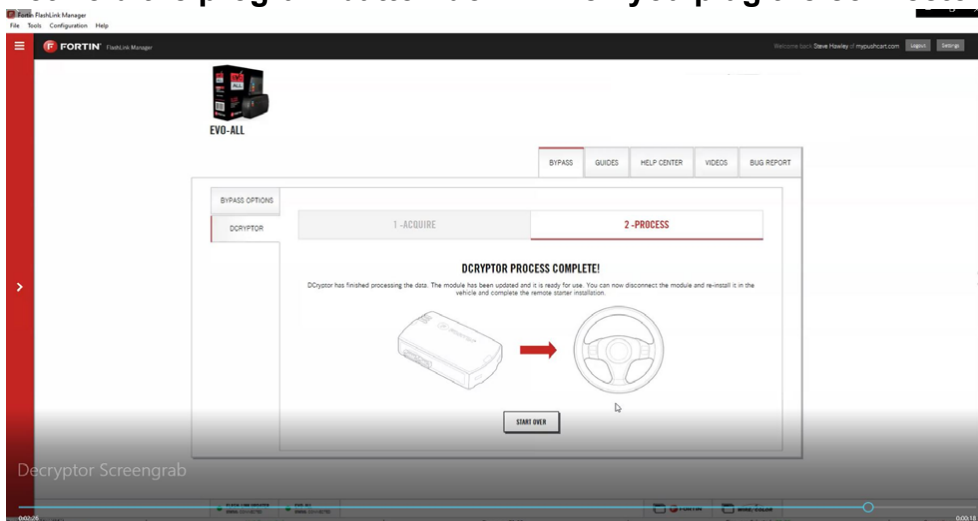
- The software will detect you plugging it in and will automatically load the current settings.
- Next, click the Dcryptor tab. Then click on the Send data button.



Wait while the updater reads data from the remote starter. Once it is done it will update the remote starter and you will need to wait again. You will see a status bar at the bottom of the screen. When it gets to 100%, the Dcryptor process is complete.

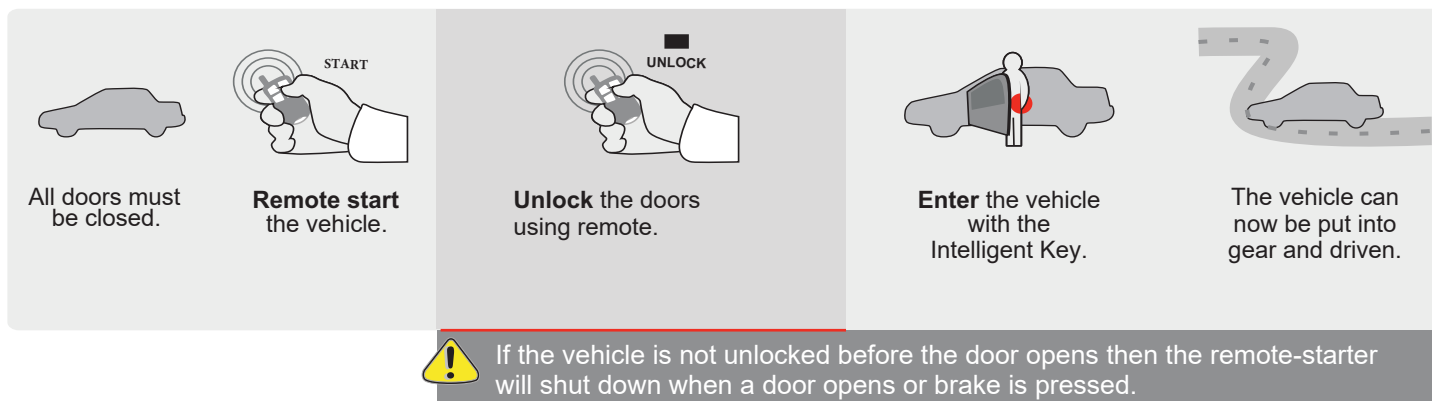


You can now unplug the remote starter module and plug it back into the connectors in your vehicle. Make sure to plug in the power connector first and then the rest of the plugs afterward. **Do not hold the program button down when you plug the connectors back in.**



Step 5: Test the System

1. Press Lock>Lock>Lock on your OEM fob three times in succession. The vehicles ignition/accessory circuits will turn on after a few seconds. Another few seconds later the starter motor will engage. It's all about getting the timing down. Lock-1000-Lock-1000-Lock. You will see the Blue light on the remote start module every time you press the button.
2. Step on the brake pedal to stop the engine.



Step 6: Close it Up

Now gather up all of your wiring and neatly bundle it together using zip ties or electrical tape. Find a secure place to put the remote start module and use zip ties to secure it. **Make sure that the remote start wires are not near any moving parts on the steering wheel, pedals or emergency brake! Re-Install any panels that were removed to gain access to key switch in reverse order they were removed. ENJOY!**

If you have any installation questions or problems, call for tech support

520.579.1531

Copyright 2024 Kleinn Automotive Accessories