

Ram Standard Key													
1500			10	11	12								
2500 (Gas/Diesel)			10	11	12								
3500 (Gas/Diesel)			10	11	12								
4500 (Gas/Diesel)			10	11	12								
5500 (Diesel)			10	11	12								
CV (Gas)			10	11	12	13	14	15					
Dodge													
Challenger (Push to Start)	08	09	10	11	12	13	14						
Challenger (Standard Key)	08	09	10	11	12	13	14						
Charger (Standard Key)	08	09	10										
Durango (Push to Start)				11	12	13							
Durango (Standard Key)				11	12	13							
Grand Caravan (Standard Key)	08	09	10	11	12	13	14	15	16	17	18	19	20
Journey (Standard Key)	08	09	10										
Magnum (Standard Key)	08												
Pick-up (Gas/Diesel)			10	11	12								
Ram (Gas/Diesel)		09	10	11	12								
Jeep													
Commander (Standard Key)	08	09	10	11									
Grand Cherokee (Push to Start)				11	12	13							
Grand Cherokee (Standard Key)	08	09	10	11	12	13							
Chrysler													
300/300C (Standard Key)	08	09	10	11									
Town & Country (Standard Key)	08	09	10	11	12	13	14	15	16				
Town & Country (Push to Start)					12	13	14	15	16				
Volkswagon													
Routan (Standard Key)	08	09	10	11	12	13	14						

- This remote start will monitor the vehicle lock circuit and use the pulses generated by pressing lock 3 times on your OEM remote to start the vehicle.
- This is a pre-wired plug and play kit.
- For 2011 and newer vehicles, no wire connections are required at all.
- 2010 and older vehicles require one connection within the T-harness.
- We have already loaded the correct firmware into the remote start module. You will need to pair the module to your vehicle when the installation is complete. Programming instructions on page 4.

- Where Everything Goes

Remote Start Module – the wiring for the module is done under the dash on the driver’s side, so you’ll want to install the module in that general area. Before you start wiring, look for a location where there’s some open space that will fit the module. Pay attention to moving parts like the pedals, e-brake and steering column. Be sure to route your wiring away from those areas.

STEP 1: Installation

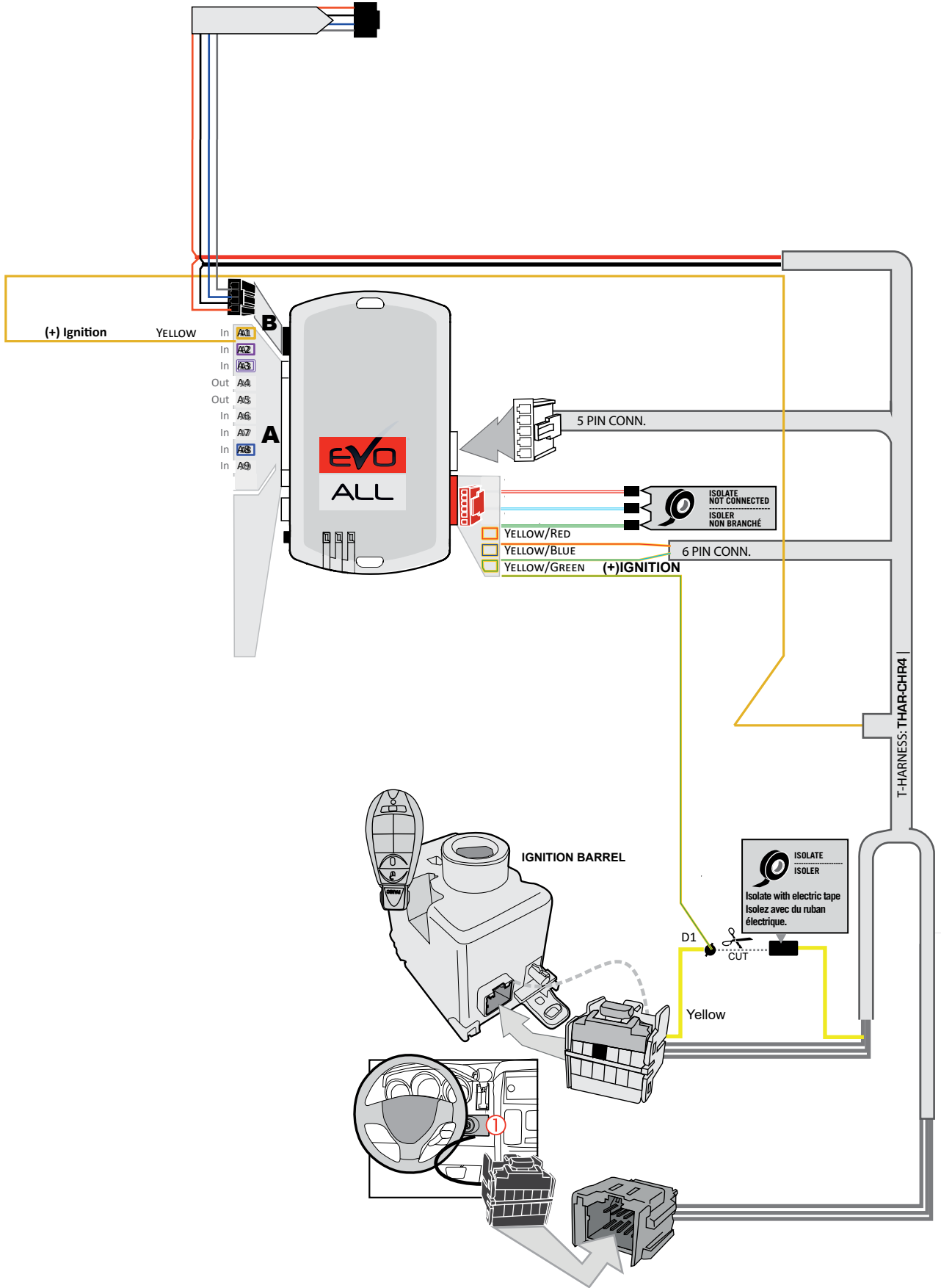
Locate the immobilizer connector at the bottom of the key cylinder. Carefully disconnect the connector and insert the male plug from the T-harness in its place. Then plug the vehicle immobilizer connector in to the T-harness female connector.

- **Caution: Be careful when disconnecting the harness from the immobilizer connector in the vehicle. It is very fragile and will break if too much force is used. Kleinn is not responsible for any damage caused by improper removal of the connector.**
- For vehicles with the ignition switch located on the steering column, remove the steering column shroud plastic to gain access to the ignition switch plug.
- If the ignition switch is mounted on the dash, it may be necessary to remove the radio to gain access to the key switch to the left of the radio cavity or remove the panel below the steering wheel.

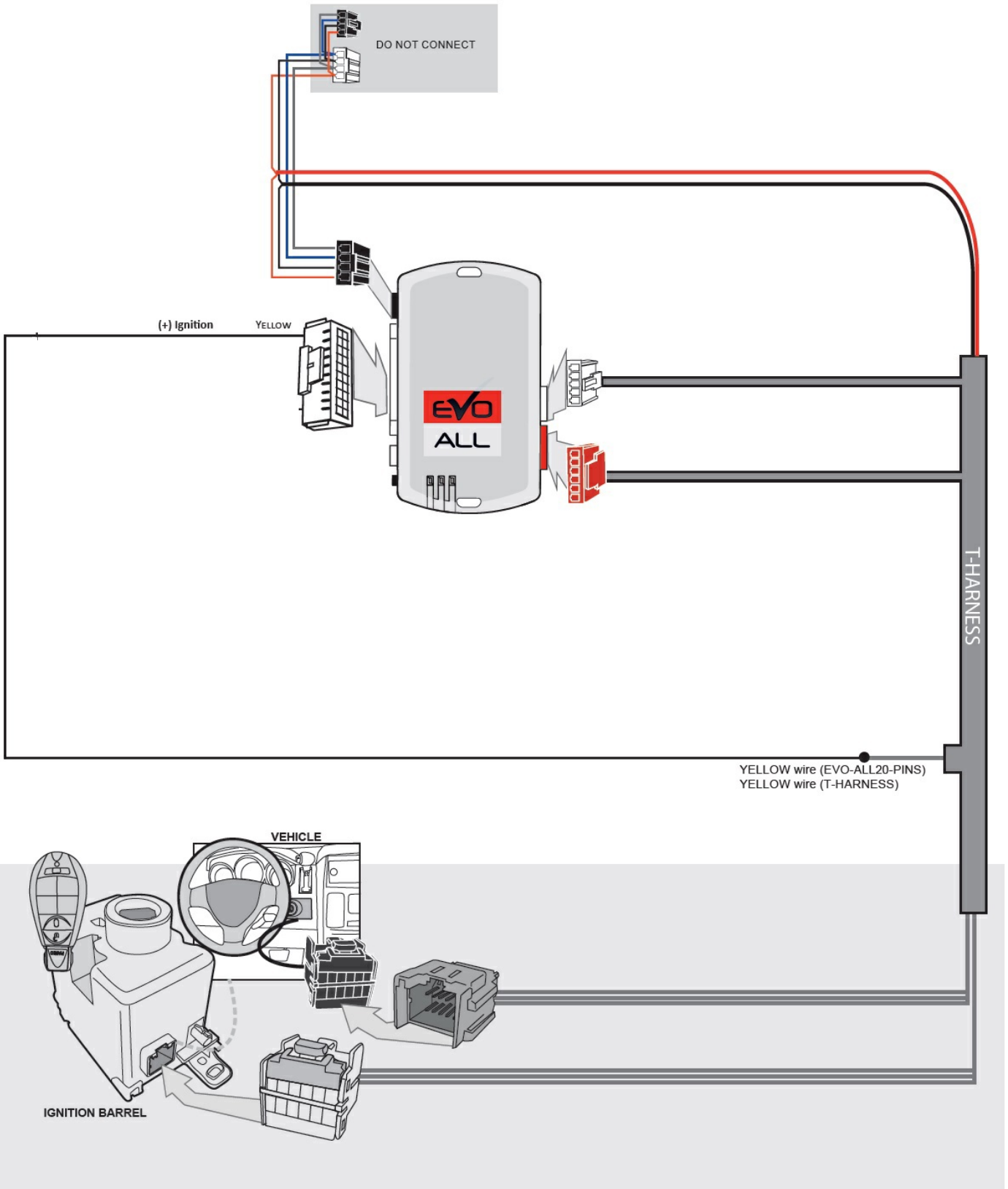
2008-2010 ONLY:

1. Locate the loose Yellow/Green wire on the Red 6-Pin plug.
2. Unplug the male T-Harness connector from the ignition switch assembly.
3. Locate the Yellow wire in the T-Harness that runs from the male ignition switch connector in to the wiring loom. Cut that wire close to the loom and use electrical tape to tape off the bare end.
4. Connect the side of the Yellow wire that goes to the male ignition plug to the Yellow/Green wire on the Red 6-Pin plug. See wiring diagram on Page 2.

System Wiring Diagram (2008-2010)



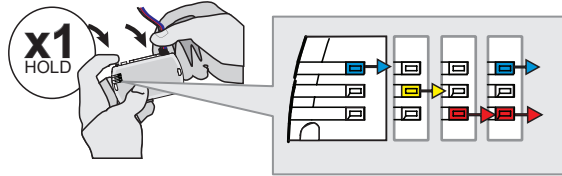
System Wiring Diagram (2011-2020)



STEP 3: Programming

Once the T-harness has been plugged in to the vehicle, the remote start module is ready to be programmed. Begin with all plugs disconnected from the remote start brain, then perform the programming steps below:

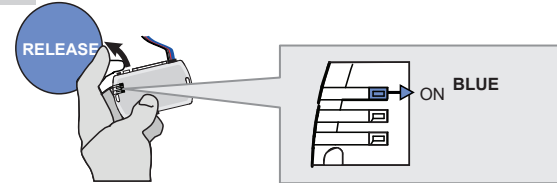
1



Press and hold the programming button:
Insert the 4-Pin (Data-Link) connector.

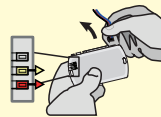
↳ The Blue, Red, Yellow and Blue & Red LEDs will alternatively illuminate.

2

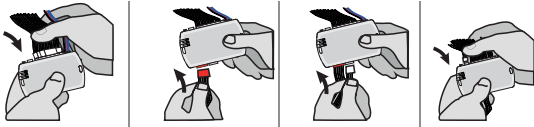


Release the programming button when the LED is BLUE.

If the LED is not solid BLUE disconnect the 4-Pin connector (Data-Link) and go back to step 1.

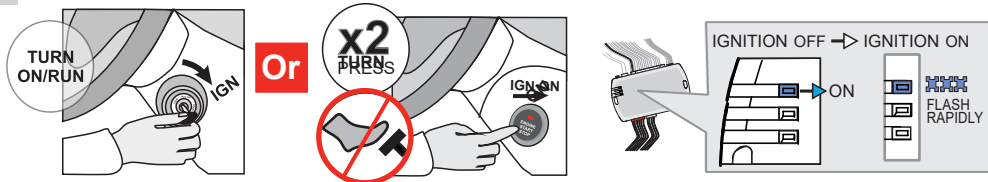


3



Insert the required remaining connectors.

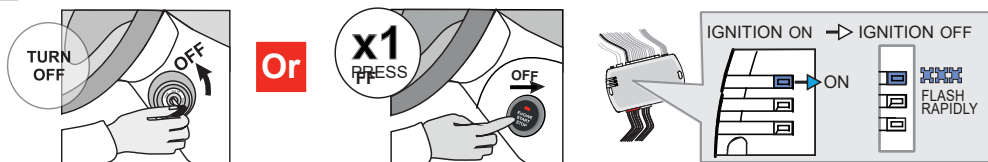
4



Turn **ON** the ignition.

↳ The BLUE LED will flash rapidly.

5

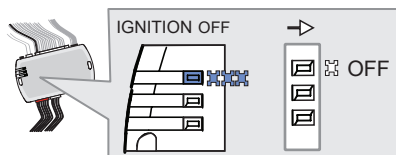


Turn **OFF** the ignition.

↳ The BLUE LED will flash rapidly.

6

With OEM remote		Press the LOCK button on the vehicles OEM remote.
Or		
Without OEM remote		Press and release the programming button on the once.



↳ The BLUE LED will turn off.



The module is now programmed.

Use the remote of the remote starter or security system to test all of the supported features to ensure proper programming.

Step 4: Test the System

1. Press "Lock>Lock>Lock" on your OEM remote control. You will see the Blue light on the remote start module every time you press the Lock button. Each press should be about 1 second apart. The vehicles ignition/accessory circuits will turn on after a few seconds. Another few seconds later the starter motor will engage.
2. Step on the brake pedal to stop the engine.

REMOTE STARTER FUNCTIONALITY



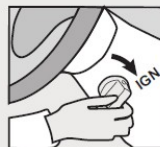
All doors must be closed.



Remote start the vehicle.



Unlock door with remote or key and enter the vehicle.



Insert the key into key switch and turn the key to the on/run position



You may now press the brake to shift into gear and drive the vehicle.



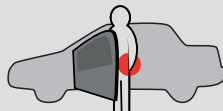
All doors must be closed.



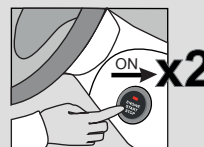
Remote start the vehicle.



Unlock the doors with either:
The OEM remote
or The remote-starter remote



Enter the vehicle with the SMART-KEY.



Press the Push-to-Start button twice to turn ON the ignition.



The vehicle can now be put in to gear and driven.

Step 5: Close it Up

Now gather up all of your wiring and neatly bundle it together using zip ties or electrical tape. Find a secure place to put the remote start module and use zip ties to secure it. **Make sure that the remote start wires are not near any moving parts on the steering wheel, pedals or emergency brake! Re-Install any panels that were removed to gain access to key switch in reverse order they were removed. Be careful not to pinch any wires. ENJOY!**

Parts List

- EVO-ALL Remote Start Data Module
- THAR-CH4 T-Harness

If you have any installation questions or problems, call for tech support

520.579.1531

Copyright 2024 Kleinn Automotive Accessories