



Installation Guide

* For automatic transmission vehicles only

RS-GM5
REV 08152023

CHEVROLET KEY to START

Silverado 1500	<u>2014-2018</u>
Silverado 1500 Limited	<u>2019</u>
Silverado 2500-3500	<u>2015-2020</u>
Suburban	<u>2015-2017</u>
Tahoe	<u>2015-2017</u>

GMC KEY to START

Sierra 1500	<u>2014-2018</u>
Sierra 2500-3500	<u>2015-2020</u>
Yukon	<u>2015-2017</u>

You may view a high-resolution color version of this guide online at <http://install.kleinn.com/RSGM5> or by scanning this QR code.



Overview

- This remote start will monitor the vehicle lock circuit and use the pulses generated by pressing Lock>Unlock>Lock on your OEM remote to start the vehicle.
- This is a pre-wired "semi-plug & play" kit. Only one wire connection is required into the vehicle for basic installation. The kit also includes an optional parking light flash feature. If used, that feature requires one wire connection.
- We have already loaded the correct firmware into the remote start module. You will need to pair the module to your vehicle when the wiring is complete. Instructions are on page 5.

There are 6 basic steps to this remote start installation. We're going to address each of these:

1. Download and install Flash Link Manager software
2. Disassemble trim to get access to connectors in the steering column
3. Make the connections.
4. Pair the remote start to the vehicle.
5. Test the system.
6. Record your Service Number
7. Button it up!

Step 1: Download and install Flash Link Manager software

**The Flash Link Manager (FLM) software only works on a Windows computer and requires a USB port and an internet connection. Enter the following link into your web browser, then download and install the software:

<https://fortin.ca/en/support/flashlinkmanager.html>

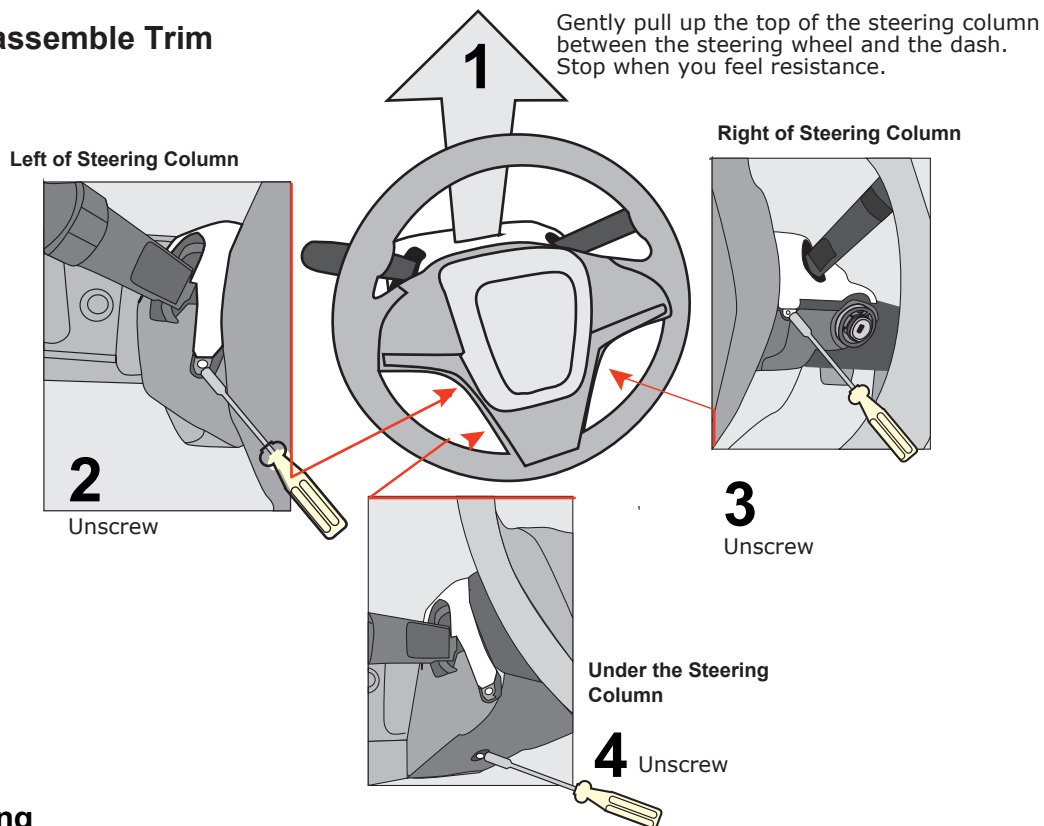
Next, open the software and log in with the following credentials:

email: flash@kleinn.com

password: Flash2020

Once the (FLM) software installed and open, then connect the Flash Link Lite (FLL) to the USB port of your Windows computer. The (FLM) software will detect (FLL) and display a message that the module is not connected, this is normal. Do not plug the remote starter into the (FLL) tool until you have completed the wiring and vehicle programming procedure at step 3. Leave the computer and software in this state ready to plug the module in when the time comes, and proceed with the wiring connections.

Step 2: Disassemble Trim



Step 3: Wiring

Most of this installation is plug & play. There is just one required wiring connection in to the vehicle and two optional connections.

The wires for the two optional connections are in the bundle of loose wires attached to the 20-pin white plug. The remaining wires in that bundle can be taped off and then either taped or zip-tied to the main T-harness. It's OK to cut them short, but we suggest leaving a few inches intact for possible advanced/future features.

3.1 REQUIRED VEHICLE WIRE CONNECTION: The Brown wire in the 5-pin harness with the white plug must be tapped ON to the green wire going to the back of Pin 1 in the OBD2 port. Do not cut the green wire in the vehicle - simply attach the brown wire from the 5-pin harness on to it. This connection **MUST** be made 'wire-on-wire'. Strip back about 3/4" inch of insulation from the green wire and about the same from the end of the brown wire. Then either solder or tightly wrap the end of the brown wire onto the bare section of the green wire, then insulate/secure with electrical tape. **DO NOT USE A T-TAP ON THIS CONNECTION.**

3.2 CONNECTIONS WITHIN THE HARNESS ASSEMBLY:

- Locate the Light Blue wire in the loose wire bundle attached to the 20-pin connector and tap it on to the Light Blue/Black wire that runs from the 20-pin connector in to the wrapped part of the harness. Solder or "wrap and tape" connections are best.
- For vehicles **WITHOUT** OnStar, connect the loose Brown wire coming from the harness loom to the Purple/Yellow wire in the bundle of loose wires attached to the 20-pin connector.

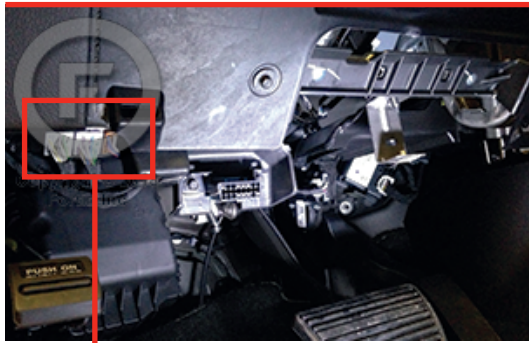
3.3 PLUG-IN VEHICLE CONNECTIONS:

- Locate the 6-pin ignition plug towards the rear of the key cylinder assembly. Release the locking tab, then remove the plug and insert it into the matching female receptacle in the t-harness. Plug the male connector from the t-harness into the ignition receptacle in the vehicle. **NOTE: The ignition connectors on later model vehicles are a slightly different shape than the earlier vehicles. Your kit includes adapters that can be put in-line to make the t-harness plugs fit the vehicle plugs correctly.**
- Locate the 3-pin Violet immobilizer plug on the ignition switch assembly. Remove the plug and insert it into the matching female receptacle in the t-harness. Plug the male connector from the t-harness into the ignition receptacle in the vehicle.

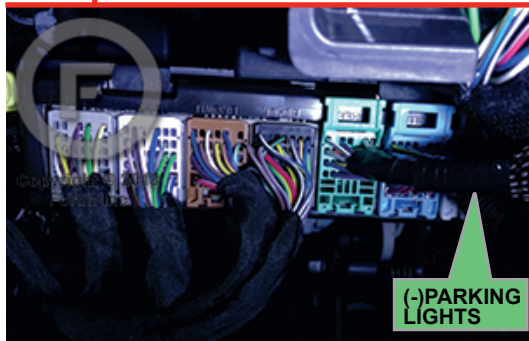
3.4 OPTIONAL WIRE CONNECTIONS - from the loose wires attached to the 20-pin connector

- a. **Parking Lights** - Connecting the Brown/White wire on to the Light Green/Grey wire in the white 26-pin BCM plug (see photo below) will illuminate the parking lights while the vehicle is running on the remote start.
- b. **Valet/Kill Switch** - There is a mini toggle switch supplied with your kit. Connecting one side of the switch to the Blue wire from the 20-pin plug and the other side of the switch to ground will allow the toggle switch to serve as a 'kill' switch for the system. Putting the switch in the "ON" position (continuity between both side of the switch) will disable the system.

Locating the wires and plugs in the vehicle



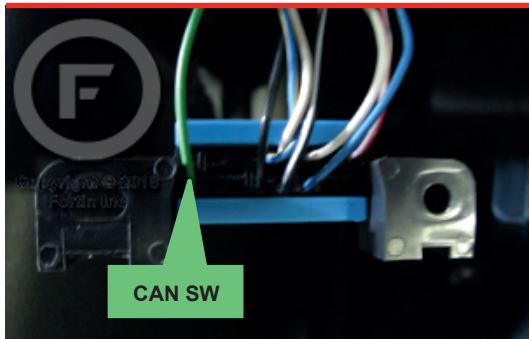
BCM Driver side dash board



(optional)

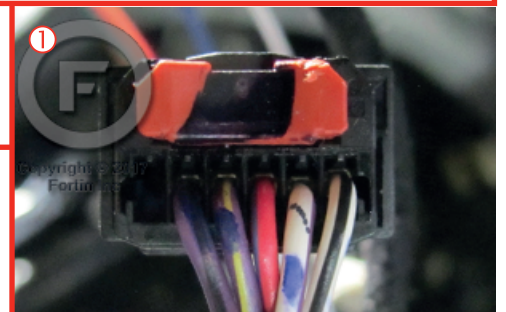
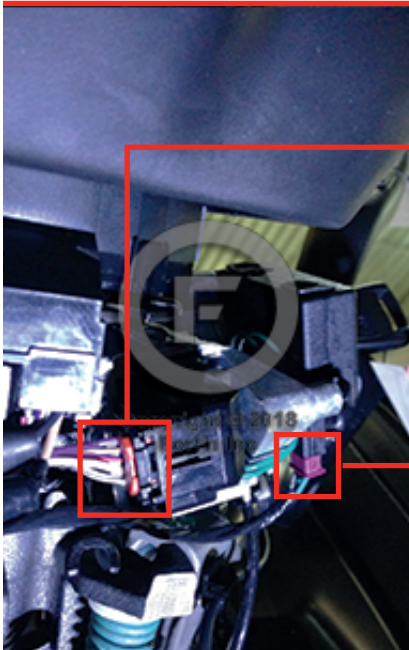


OBD2 connector

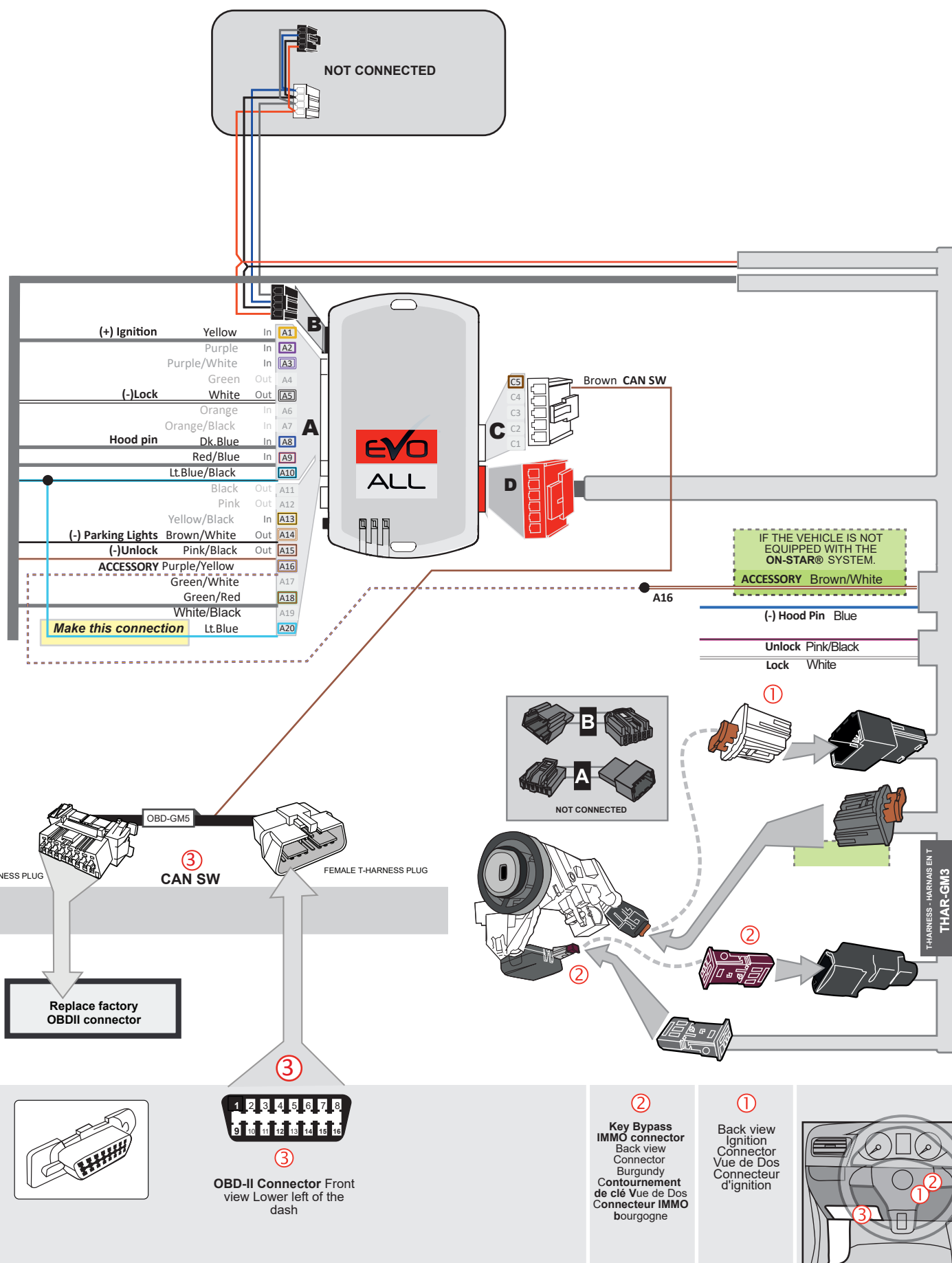


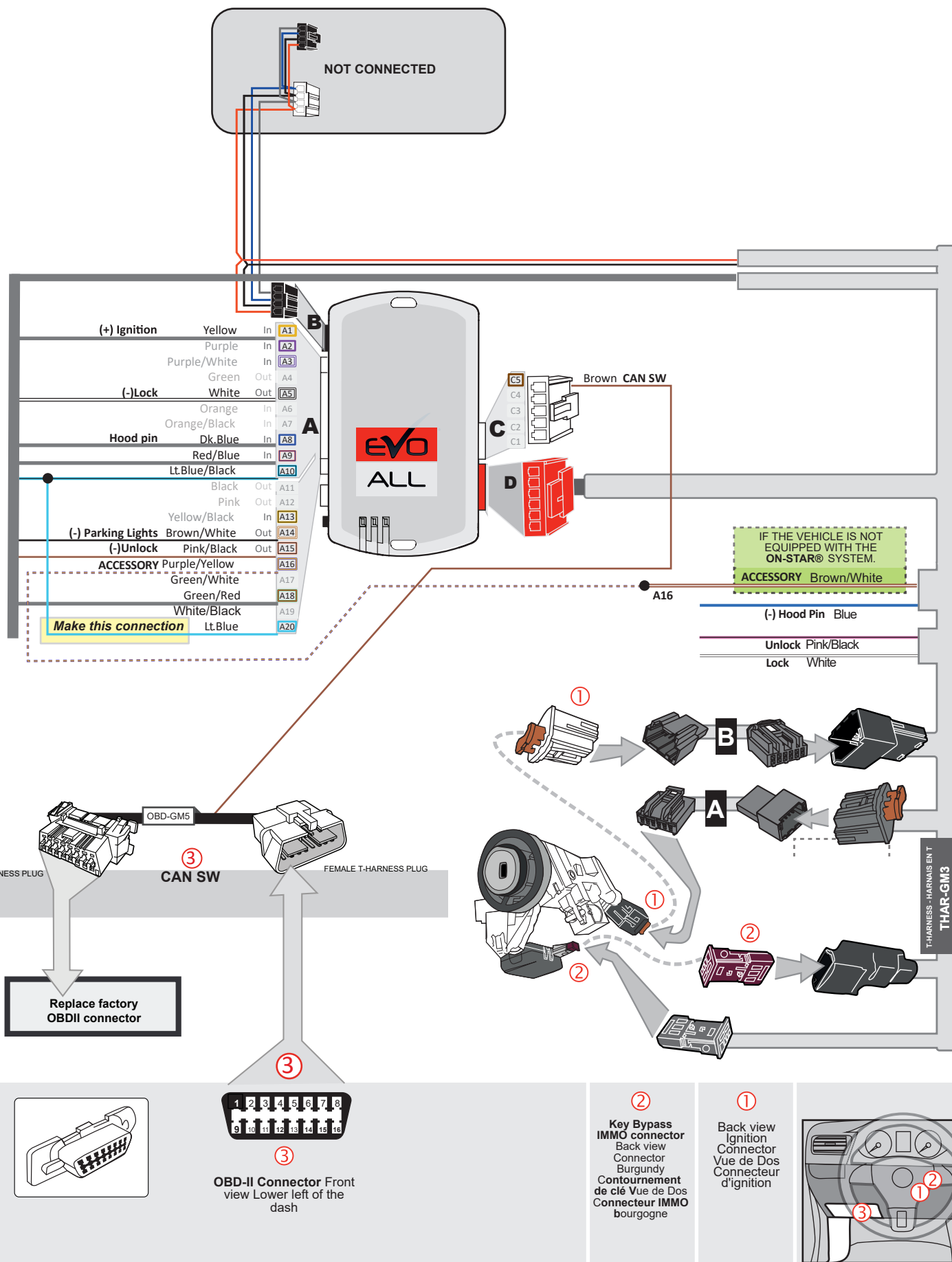
CAN SW

Ignition Barrel #1-Ignition Connector #2 Immobilizer Connector

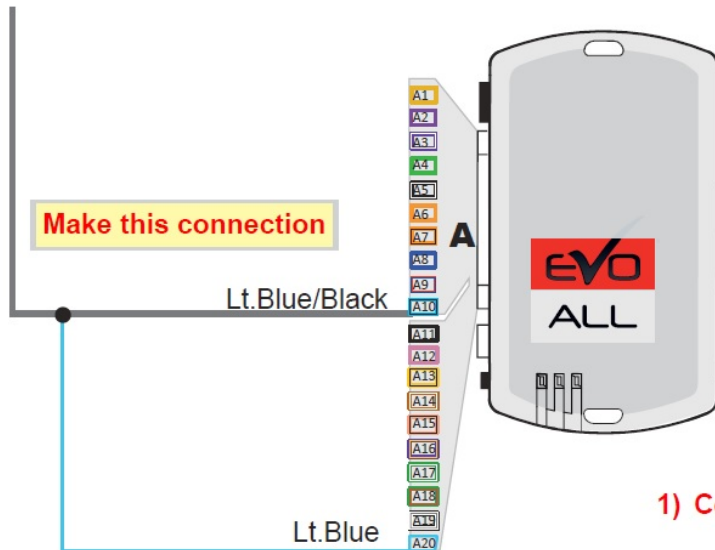


Wiring Diagram





Wire Connection

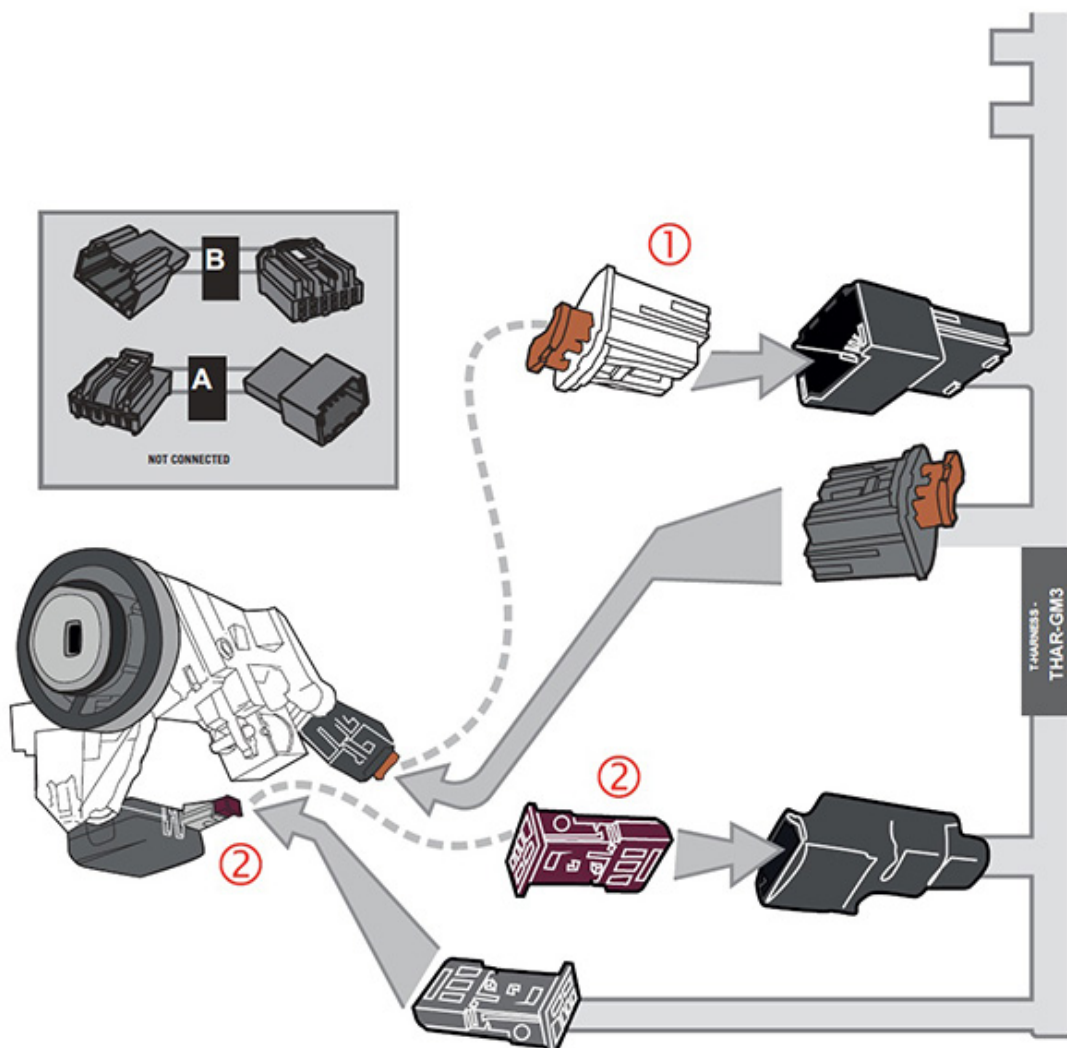


This kit needs one wire connected to the T-Harness in order to function. Connect the Lt. Blue wire in the 20-pin plug of the EVO ALL to the Lt. Blue/Black wire as shown here.

Make this connection

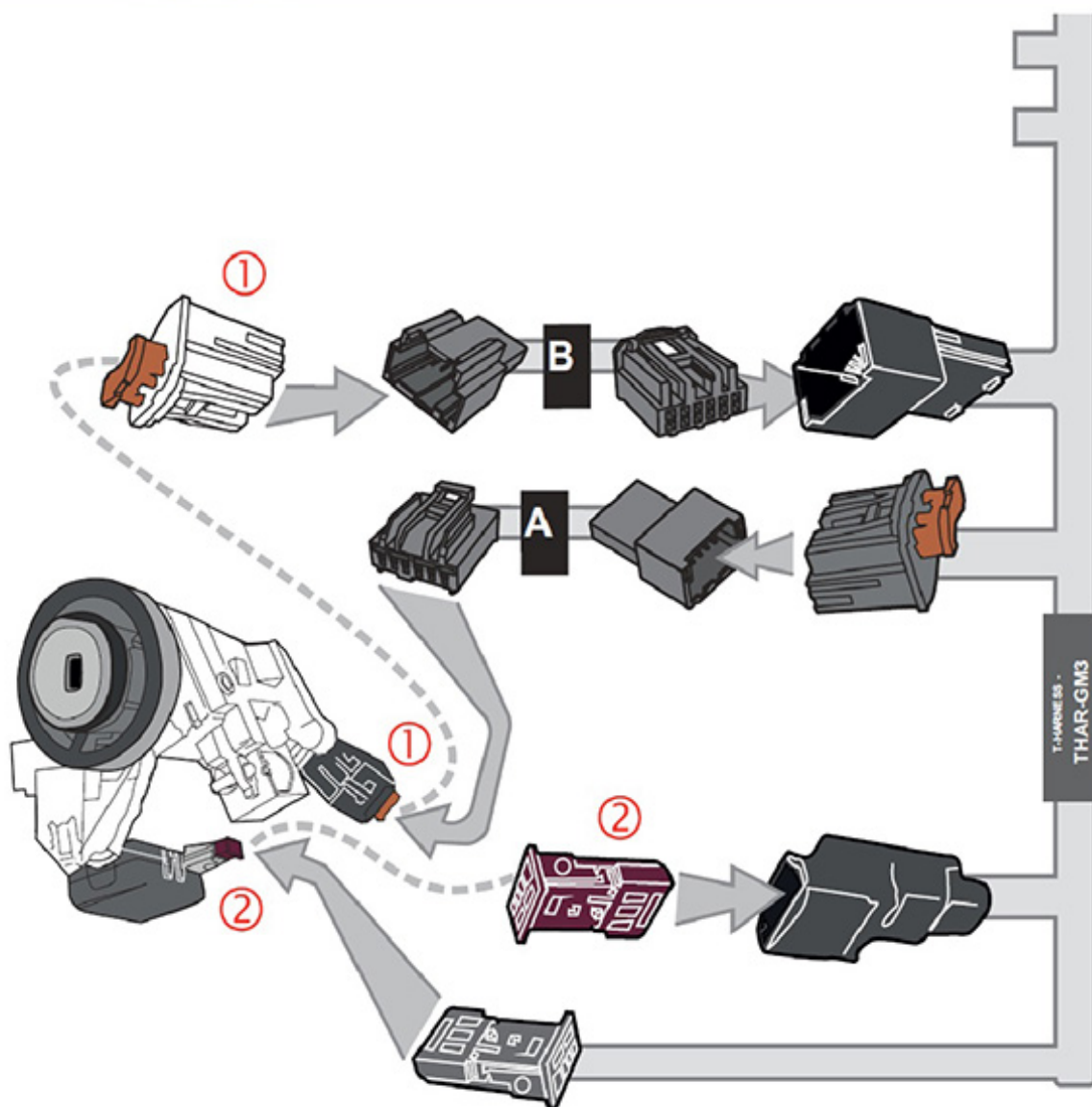
- 1) Connect the Lt. Blue wire to Lt. Blue/Black wire.**

Connecting the T Harness



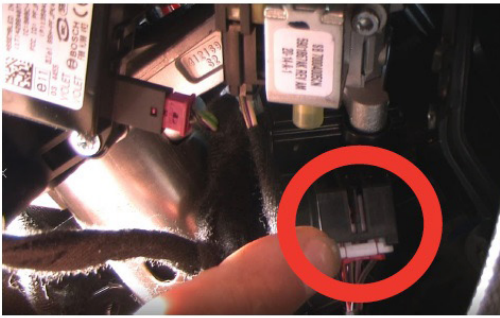
NOTE**2016**

Ignition connector has changed in later 2016 models. Check before trying to install using a T-harness. Models before 2016 will not need the A/B adapters. Models made after 2016 will require the A/B adapters to be plugged in for use.

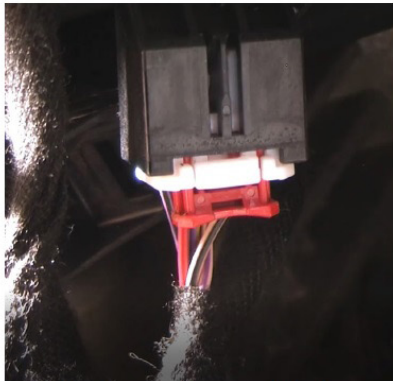


Once you have the panels removed you will see a larger Ignition plug and the smaller Immobilizer plug at the key cylinder shown below.

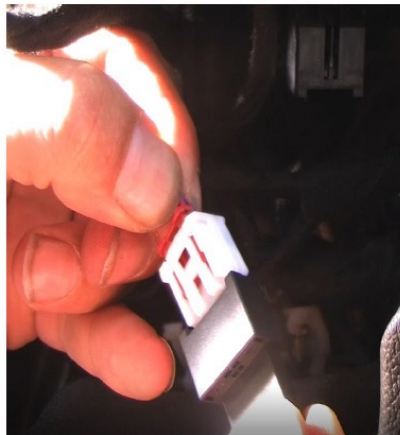
Ignition Plug 1st



Immobilizer Plug 2nd



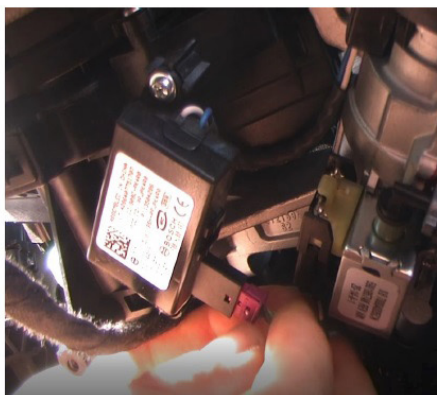
Unplug the larger plug and plug it into the Female end of the T-Harness shown below.



The larger plug needs to be connected the T-Harness first. You will need to push the Red locking tab down before you press the release tab to remove the larger plug.

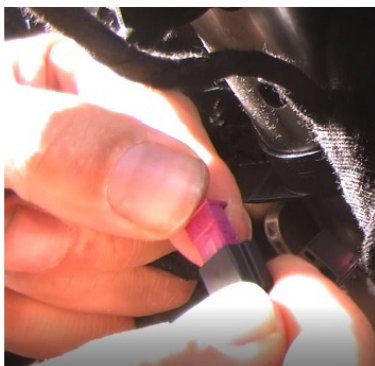


Next, plug the male end of the T-Harness into empty connector in your vehicle as shown above. Make sure the plugs are in tight and secure.



Next locate the smaller Red Immobilizer plug and unplug it.

Plug the Red plug into the small female plug on the T-Harness shown below.



Next, plug the male end of the T-Harness into the empty connector in your vehicle as shown below.



Next, locate the OBDII connector under the dash board and connect the labeled Brown Data wire to pin 1 of the OBDII connector.

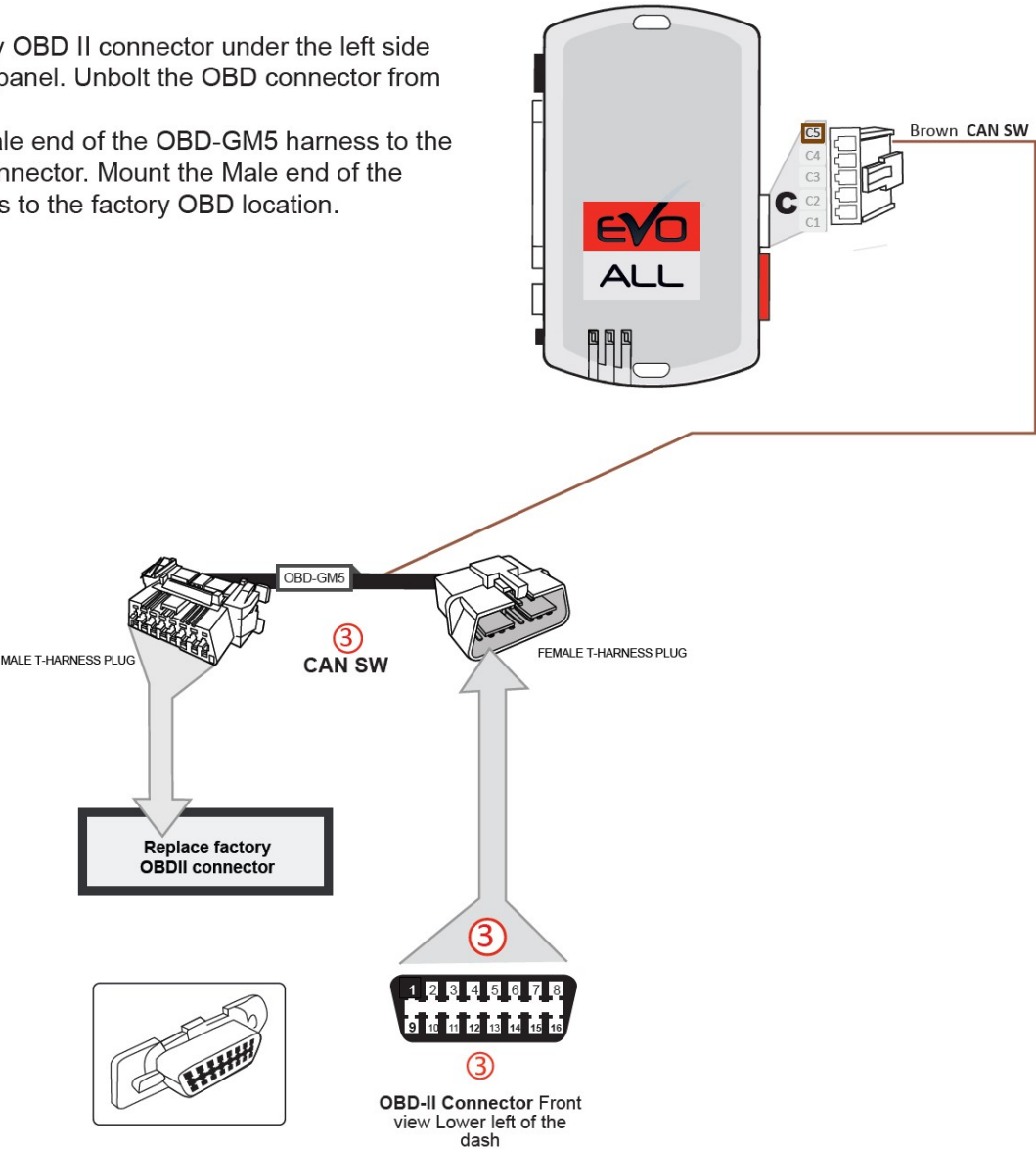


Plug-C OBD-II connections



③ OBD-II connector

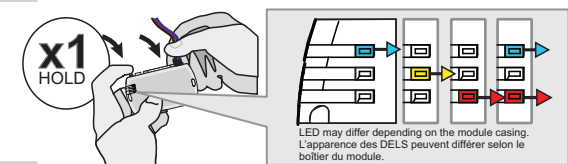
Locate the Factory OBD II connector under the left side of the lower dash panel. Unbolt the OBD connector from dash panel.
Connect the Female end of the OBD-GM5 harness to the Factory OBD II connector. Mount the Male end of the OBD-GM5 harness to the factory OBD location.



Step 4: Programming/Pairing

Unplug all the connectors from the EVO module, then follow the steps below.

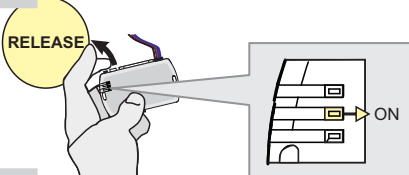
1



Press and hold the programming button:
Connect the 4-PIN Data-link harness (Black connector).

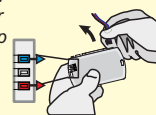
↳ The Blue, Red, Yellow and Blue & Red LEDs will alternatively illuminate.

2

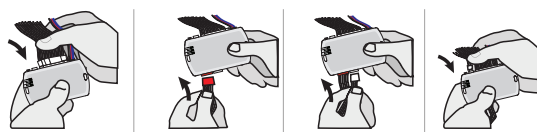


Release the programming button when the LED is **YELLOW**.

If the LED is not solid **YELLOW** disconnect the 4-Pin connector (Data-Link) and go back to step 1.

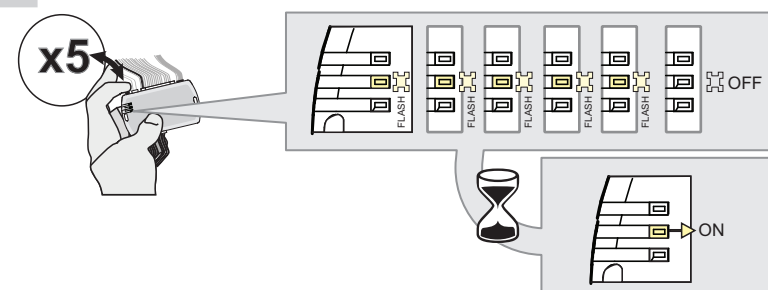


3



Insert the required remaining connectors.

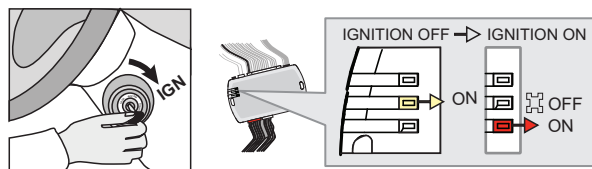
4



Press and release the programming button five times (5x).

↳ The **YELLOW** LED will alternate between 5x flashes and a pause.
↳ Wait until the **YELLOW** LED turns **ON**.

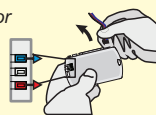
5



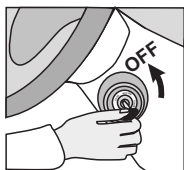
Turn the key to the Ignition **ON/RUN** position.

↳ The **RED** LED will turn **ON**.
↳ The **YELLOW** LED turns **OFF**.

If the LED is not solid **RED** disconnect the 4-Pin connector (Data-Link) and go back to step 1.

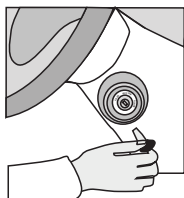


6



Turn the key to the **OFF** position.

7



Remove the key from the Ignition barrel.

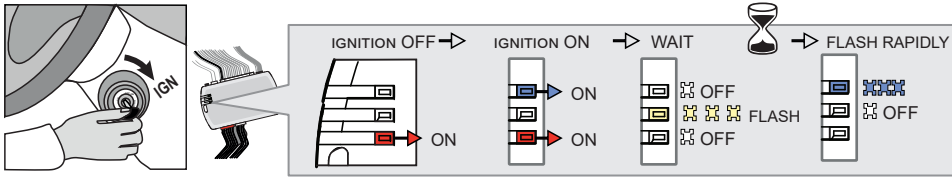
CONTINUED NEXT PAGE

8

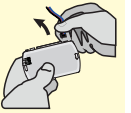


Wait 5 seconds.

9



If the LEDs do not react as shown, disconnect the 4-Pin connector (Data-Link) and go back to step 1.



Turn the Ignition to the ON position.

- ↳ The BLUE LED will turn ON.
- ↳ Wait, the BLUE & RED LED will turn OFF.
- ↳ Wait, the YELLOW LED will Flash.
- ↳ Wait, the YELLOW LED will turn OFF.
- ↳ Wait, the BLUE LED will Flash rapidly.

10



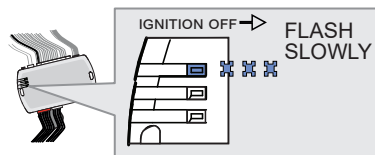
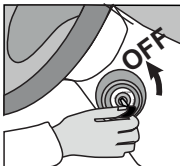
WITHOUT ON-STAR®

Press and release the programming button once (1x).

WITH ON-STAR®

Skip this step

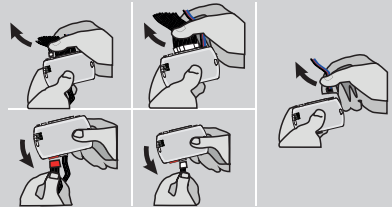
11



Turn the key to the OFF position.

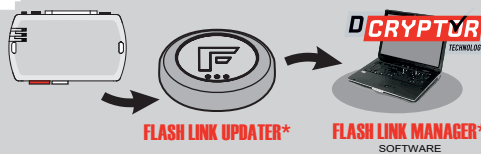
↳ the BLUE LED flash slowly.

12



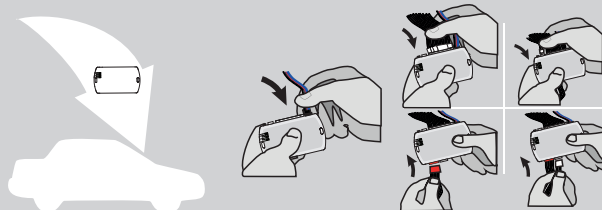
Disconnect all the connectors and after the Data-Link (4-pins) connector.

13



Use the tool:
FLASH LINK UPDATER.
Detailed instructions on Page 7.

14



AFTER DCRYPTOR PROGRAMMING COMPLETED
Go back to the vehicle and **reconnect** the 4-Pin (Data-Link) connector and after, all the remaining connector.

The module is now programmed.



Test the remote starter. Remote start the vehicle.

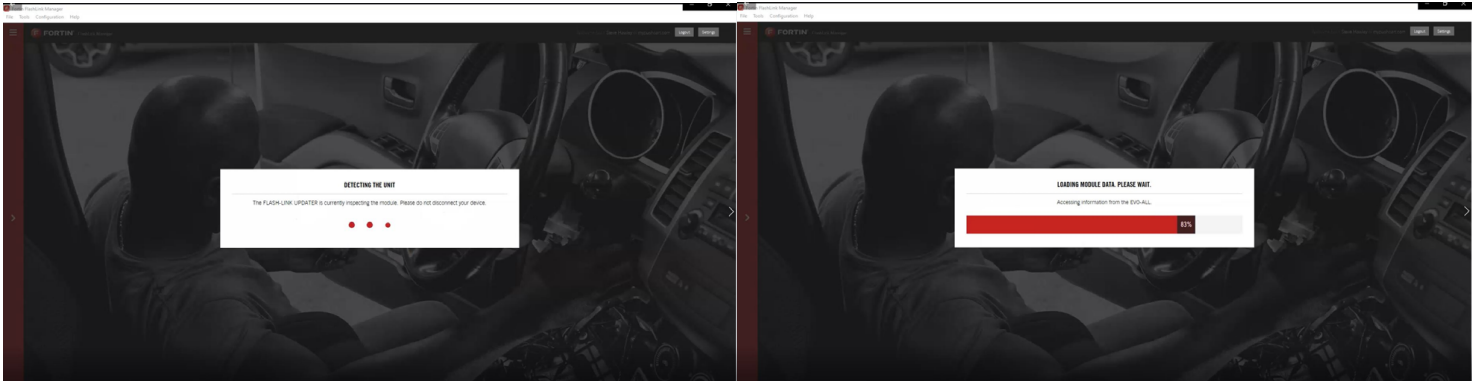
DCRYPTOR PROGRAMMING EXPLAINED

DCRYPTOR writes the digital code from your key in to the EVO module. It cannot be done in advance - it must be done after wiring is completed.

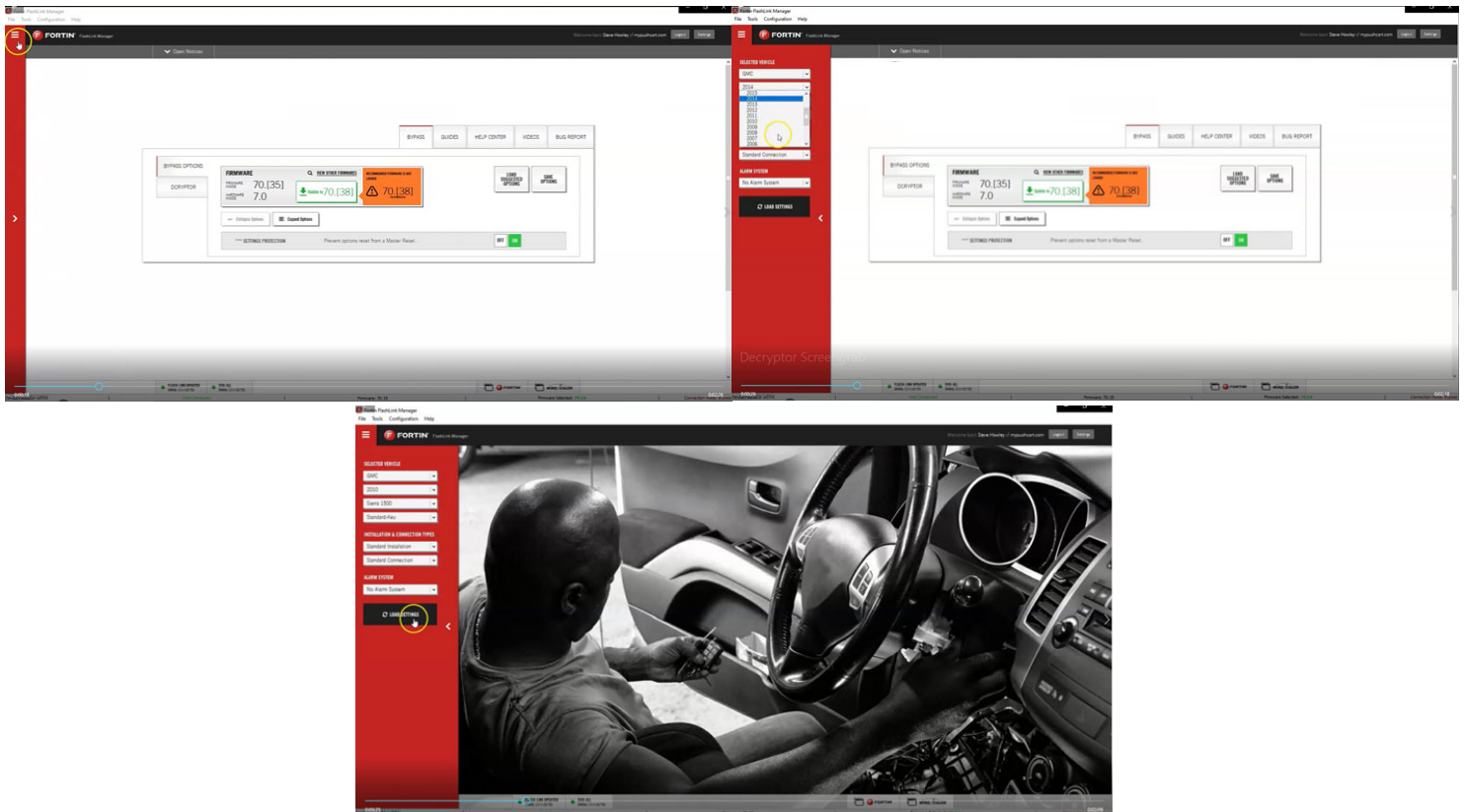
Bring the remote starter module to your computer and plug it into the supplied four-pin plug from the Flashlink Lite (FLL). For a video on how to do these steps visit: www.kleinn.com/flashlink



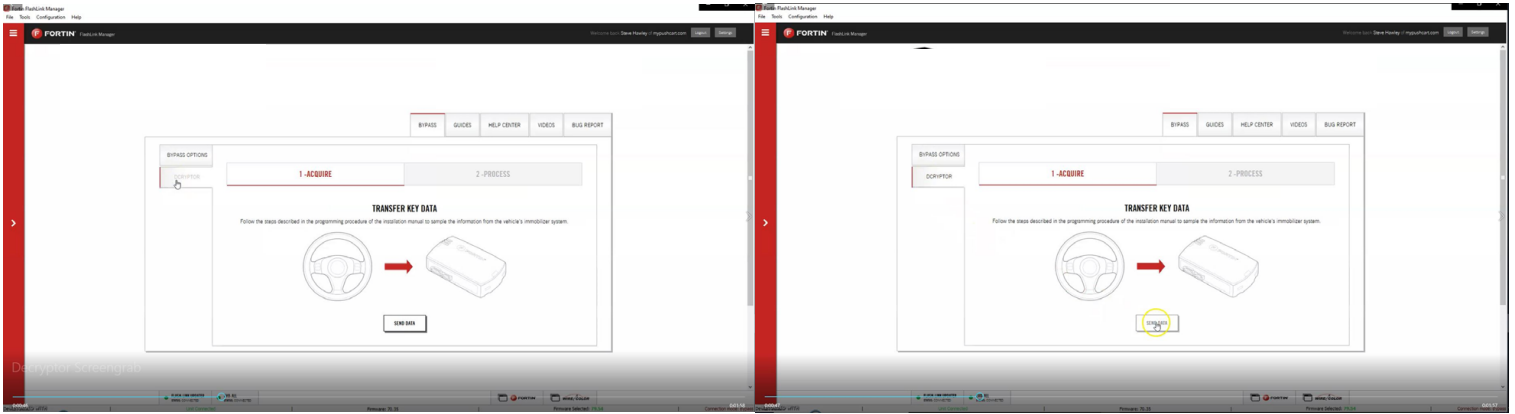
1. The software will detect you plugging it in and will automatically load the current settings.



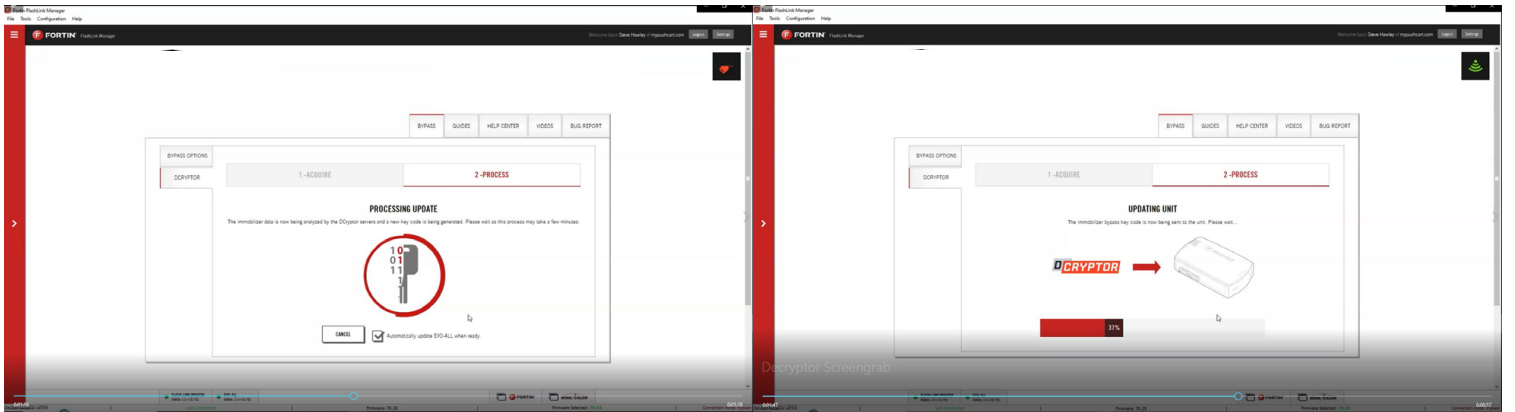
2. Select your vehicle. Click the three bars at the top of the Red bar on the upper left corner of the screen. Select your make, year, model, key type and then click load settings. Do not change any other dropdowns or any options - we have already done these settings for you.



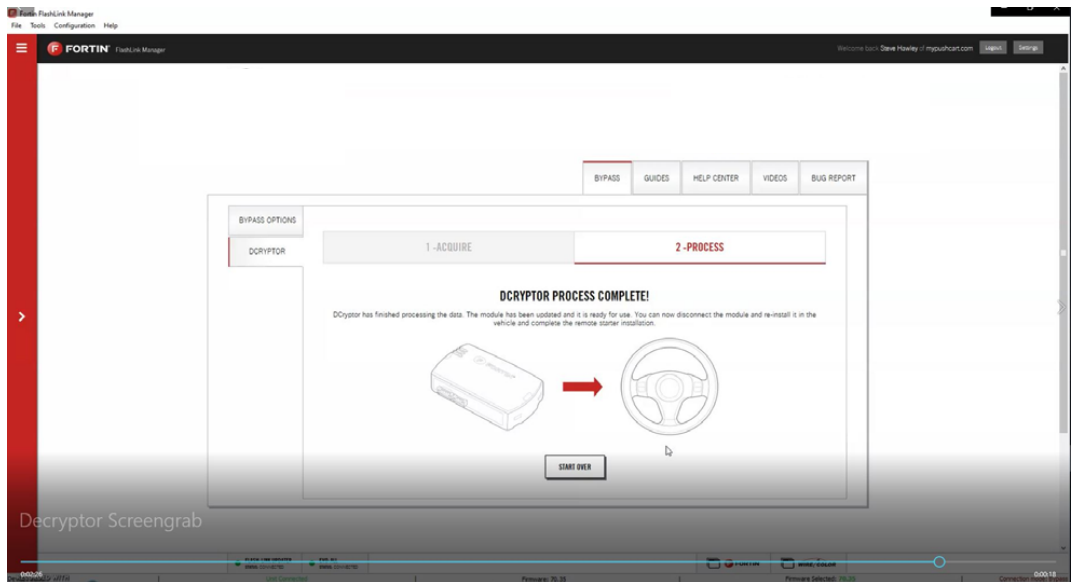
3. Click the Dcryptor tab. Then click on the Send Data button.



4. Wait while the updater reads data from the remote starter. Once it is done it will update the remote starter and you will need to wait again. You will see a status bar at the bottom of the screen. When it gets to 100%, the Dcryptor process is complete.

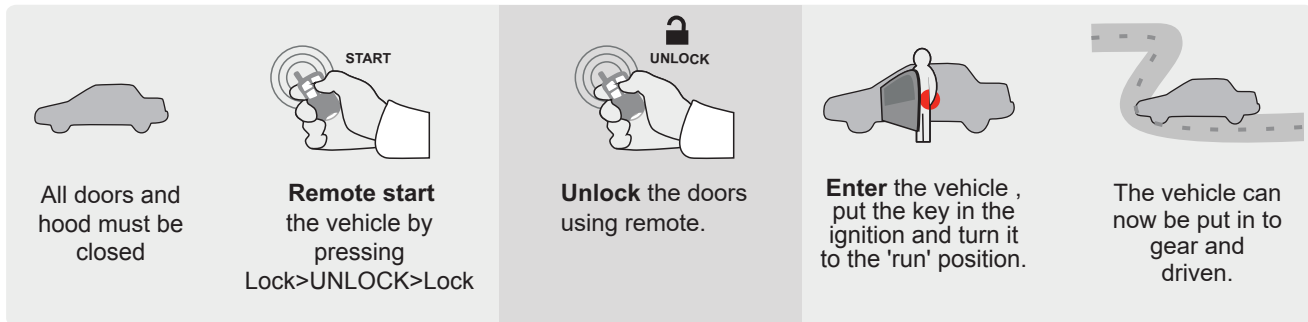


5. You can now unplug the remote starter module and plug it back into the connectors in your vehicle. Make sure to plug in the power connector first and then the rest of the plugs afterward. Do not hold the program button down when you plug the connectors back in.



Step 5: Test the System

1. Press "Lock>UNLOCK>Lock" on your OEM remote control. You will see the Blue light on the remote start module every time you press the Lock or Unlock buttons. Each press should be about 1 second apart. The vehicles ignition/ accessory circuits will turn on after a few seconds. Another few seconds later the starter motor will engage.
2. Step on the brake pedal to stop the engine.



Step 6: Record your service number

Your EVO-ALL module has a unique service number. Before closing up the installation, record that. In the event Kleinn tech support needs to troubleshoot your system, they may need your service number to look up the current status of your module.

001A07 _____



Step 7: Close it Up

Now gather up all of your wiring and neatly bundle it together using zip ties or electrical tape. Find a secure place to put the remote start module and use zip ties to secure it. **Make sure that the remote start wires are not near any moving parts on the steering wheel, pedals or emergency brake! Re-Install any panels that were removed to gain access to key switch in reverse order they were removed. Be careful not to pinch any wires. ENJOY!**

Parts List

- EVO-ALL Remote Start Data Module
- THAR-GM3 T-Harness
- GM17 - Ignition plug adapter for later model vehicles
- EVOWIRE5 5-pin plug, white connector
- Toggle Switch
- Pin Switch (not needed for most vehicles)

If you have any installation questions or problems, call for tech support

520.579.1531

Copyright 2021 Kleinn Automotive Accessories